

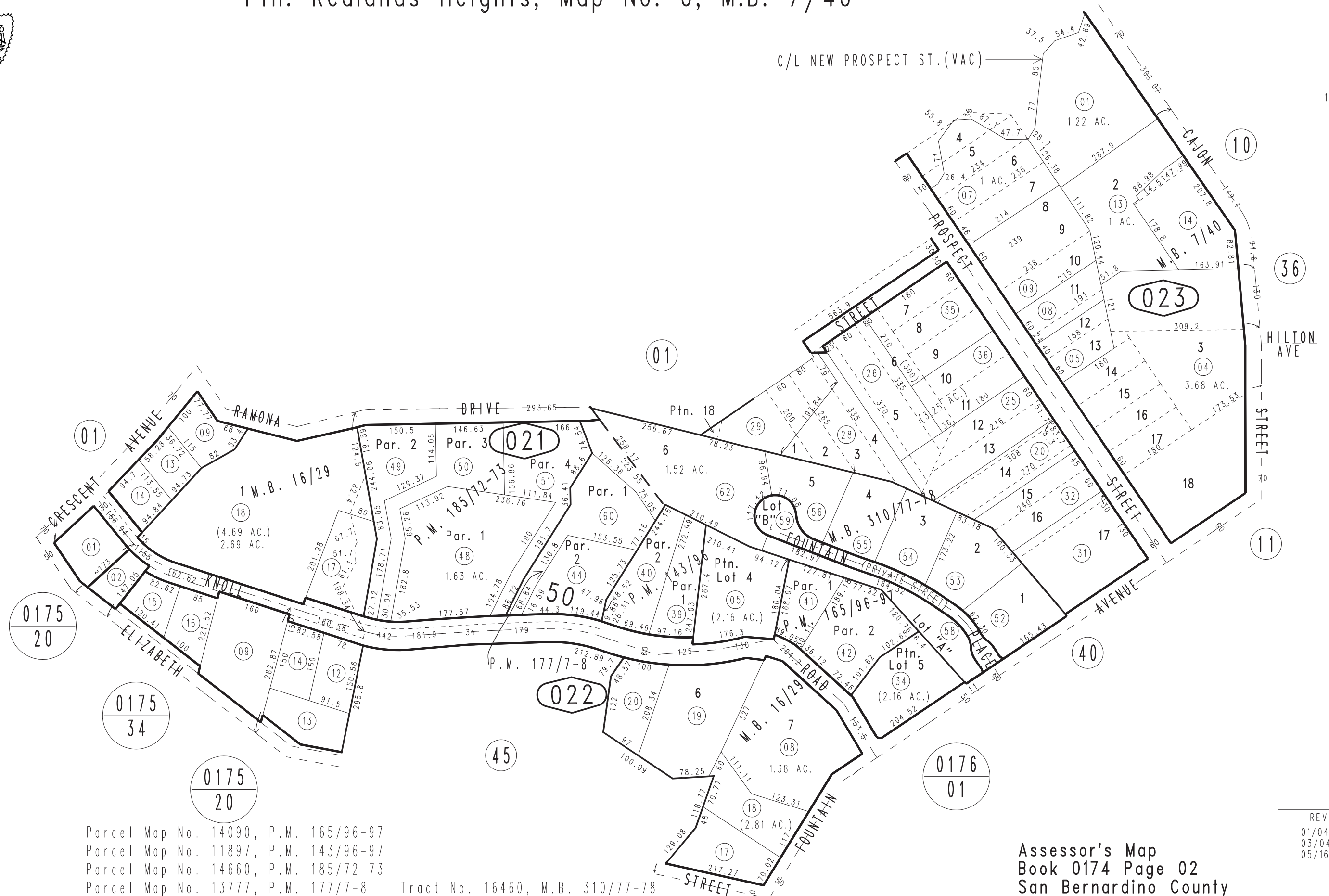
THIS MAP IS FOR THE PURPOSE
OF AD VALOREM TAXATION ONLY.



Sub. of Ptn. Blk. 50, Map No. 9, Redlands Heights, M.B. 16/29
Ptn. Redlands Heights, Map No. 9, M.B. 9/28
Ptn. Redlands Heights, Map No. 6, M.B. 7/40

City of Redlands
Tax Rate Area
5000

0174 - 02



Parcel Map No. 14090, P.M. 165/96-97
Parcel Map No. 11897, P.M. 143/96-97
Parcel Map No. 14660, P.M. 185/72-73
Parcel Map No. 13777, P.M. 177/7-8

Tract No. 16460, M.B. 310/77-78

Assessor's Map
Book 0174 Page 02
San Bernardino County

REVISED
01/04/10 LH
03/04/11 GW
05/16/12 BK-MC