

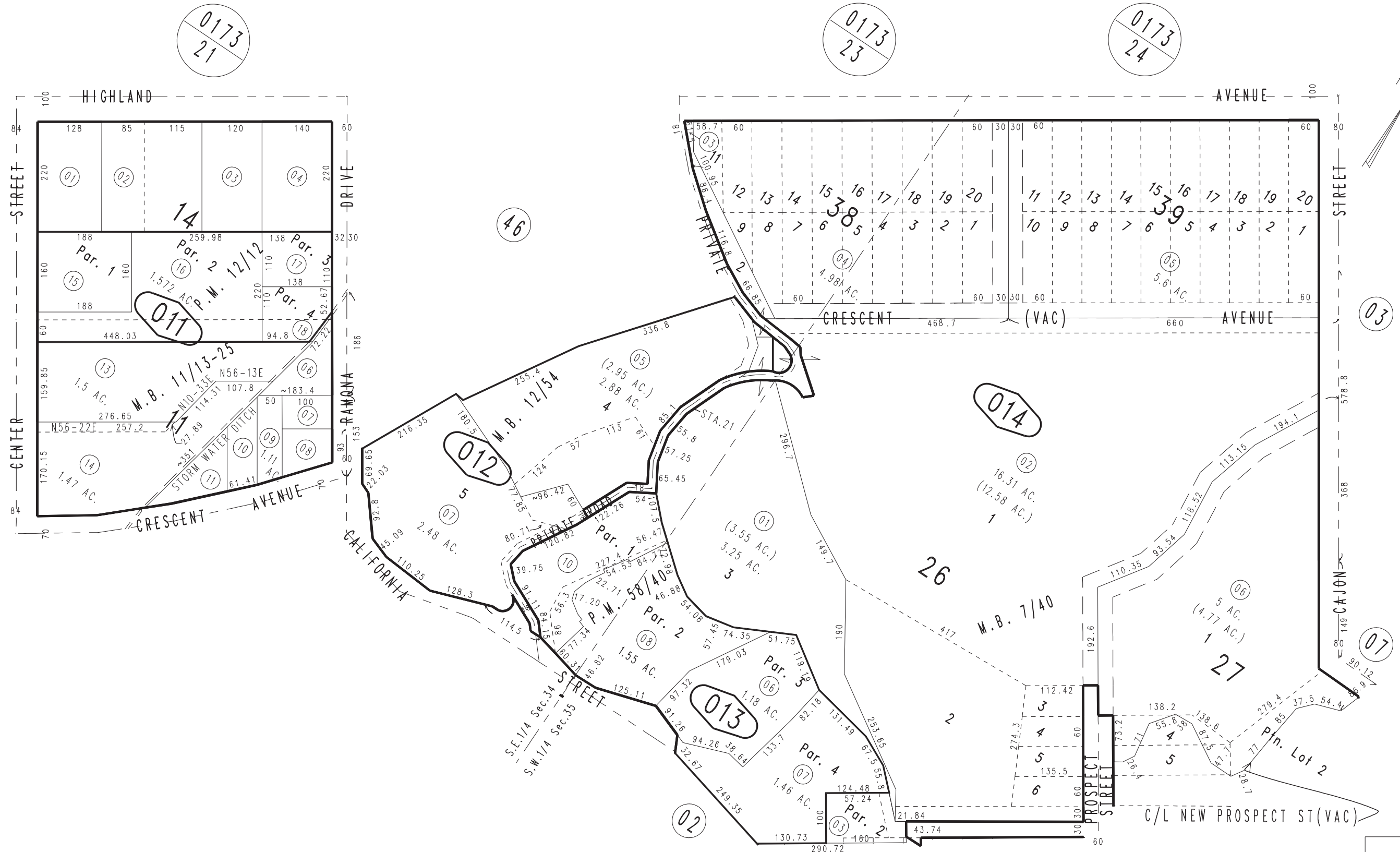
THIS MAP IS FOR THE PURPOSE OF AD VALOREM TAXATION ONLY.



Ptn. Redlands Heights, Map No. 13, M.B. 11/13 & 11/25
Ptn. Redlands Heights, Map No. 6, M.B. 7/40
Belle View Tract, M.B. 12/54

City of Redlands
Tax Rate Area
5000

0174 - 01



January 2004

Parcel Map No. 1495, P.M. 12/12
Parcel Map No. 5914, P.M. 58/40

Ptn. S.W.1/4 Sec.35
Ptn. S.E.1/4 Sec.34
T.1S., R.3W.

Assessor's Map
Book 0174 Page 01
San Bernardino County

REVISED
11/27/17 KC
11/28/17 KC-MC