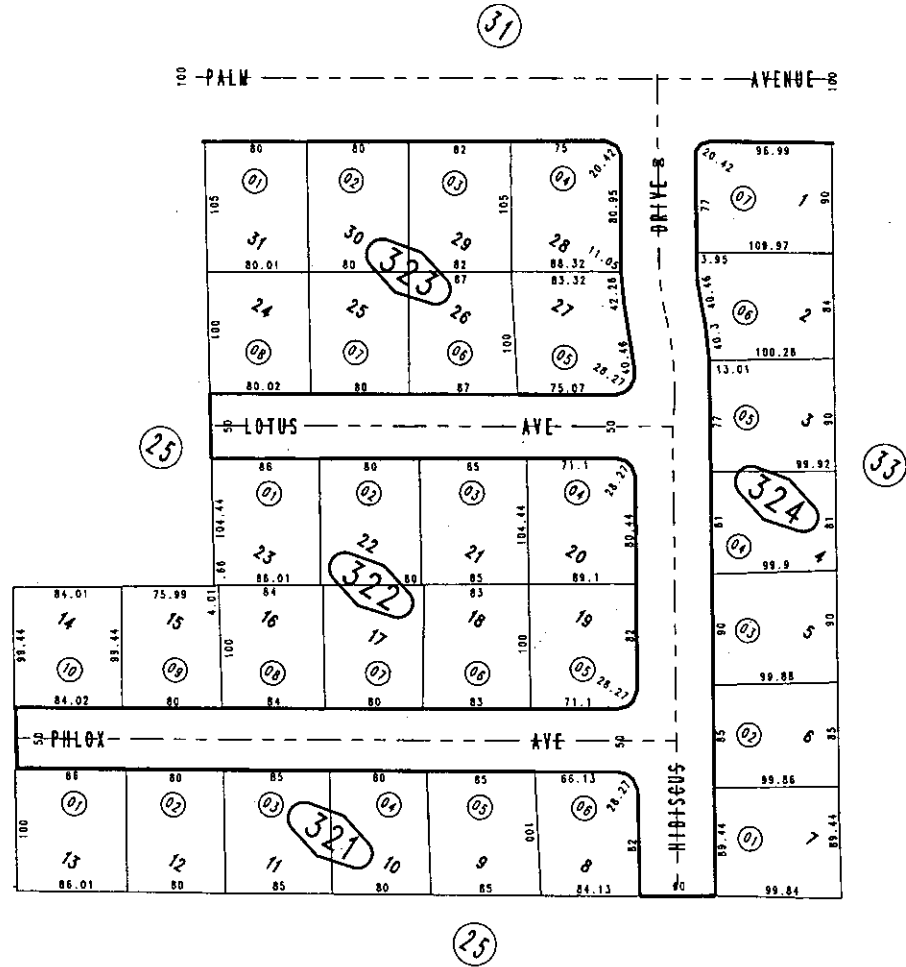


THIS MAP IS FOR THE PURPOSE
OF AD VALOREM TAXATION ONLY.

Cypress Grove Unit No. 3 Tract No. 5779 M.B. 73/57

City of Redlands
Tax Rate Area
5000

0173 - 32



December 2003

Assessor's Map
Book 0173 Page 32
San Bernardino County

REVISED