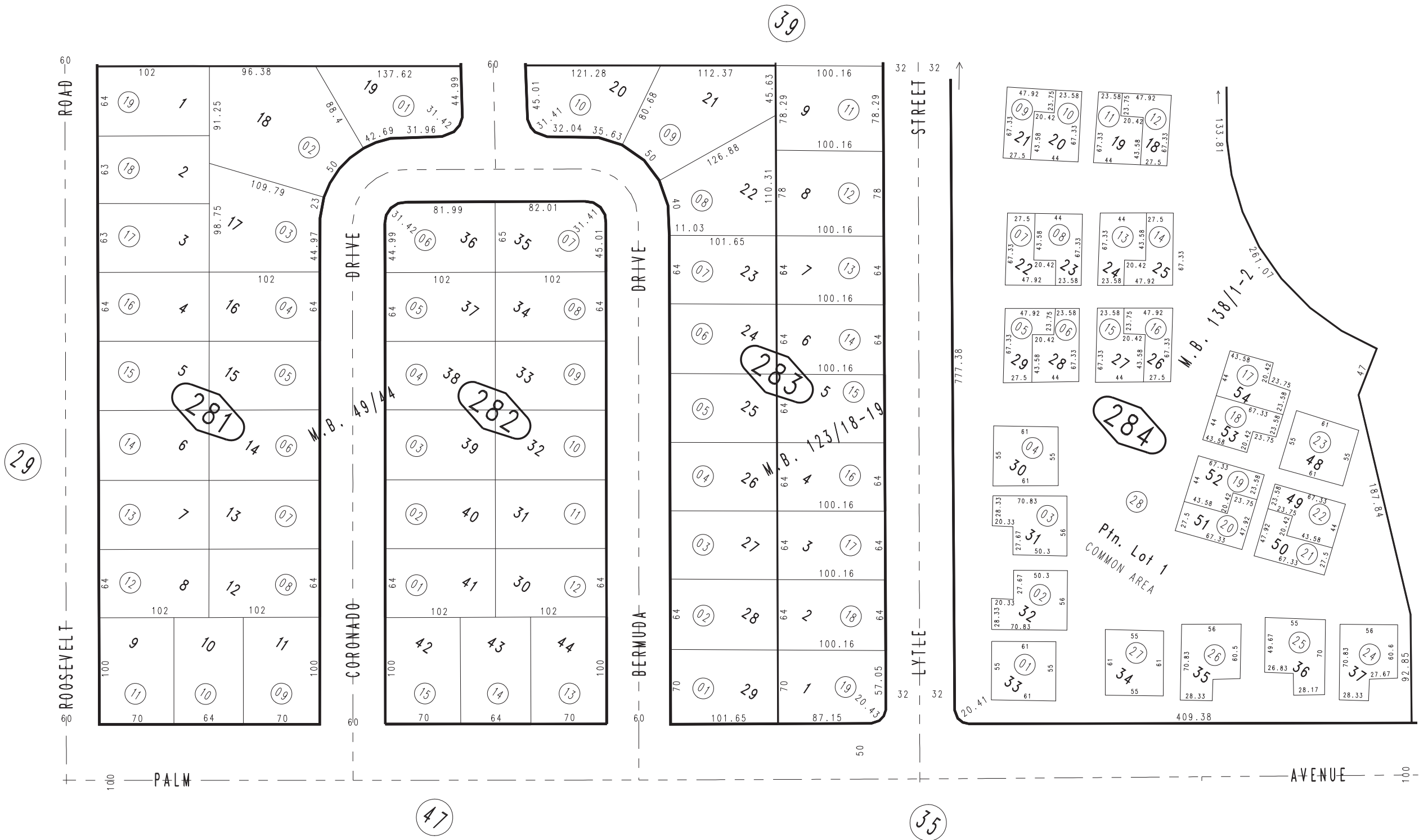


THIS MAP IS FOR THE PURPOSE OF AD VALOREM TAXATION ONLY.

Palm Terrace Sub. Tr. No. 3830 M.B. 49/44

City of Redlands
Tax Rate Area
5000

0173 - 28



December 2003

Ptn. Tract No. 8804-1, M.B. 138/1-2
Ptn. Tract No. 8853, M.B. 123/18-19

Assessor's Map
Book 0173 Page 28
San Bernardino County

REVISED
04/29/11 RM
05/22/12 BK-MC