

THIS MAP IS FOR THE PURPOSE
OF AD VALOREM TAXATION ONLY.

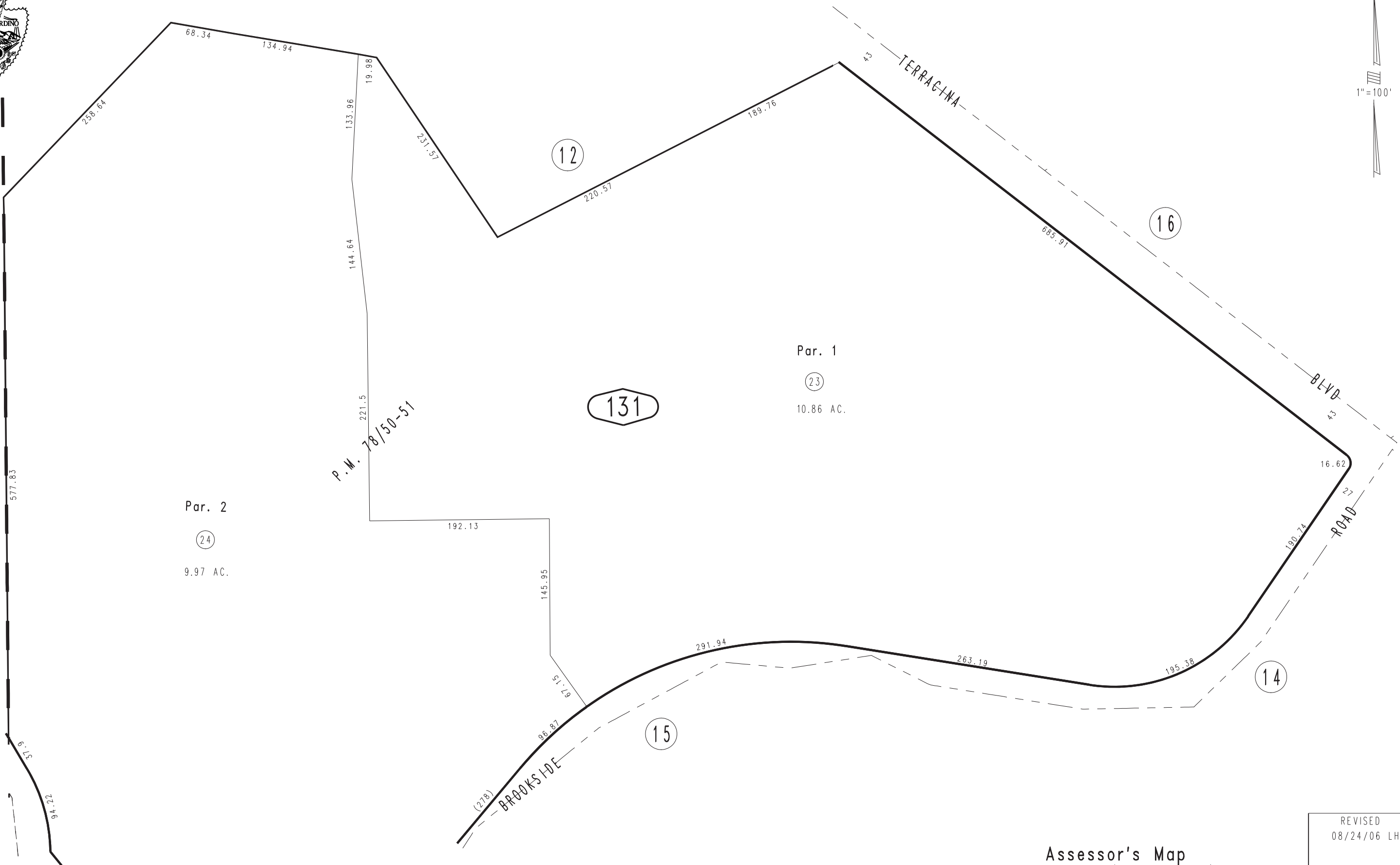
Ptn. S.W.1/4 S.W.1/4 Sec. 33, T.1S.,R.3W. S.B.B.&M.

City of Redlands
Tax Rate Area
5000

0172 - 13



0293
16



Par. 2
(24)
9.97 AC.

Par. 1
(23)
10.86 AC.

P.M. 78/50-51

Ptn. Parcel Map No. 7782, P.M. 78/50-51

December 2003

Assessor's Map
Book 0172 Page 13
San Bernardino County

REVISED
08/24/06 LH