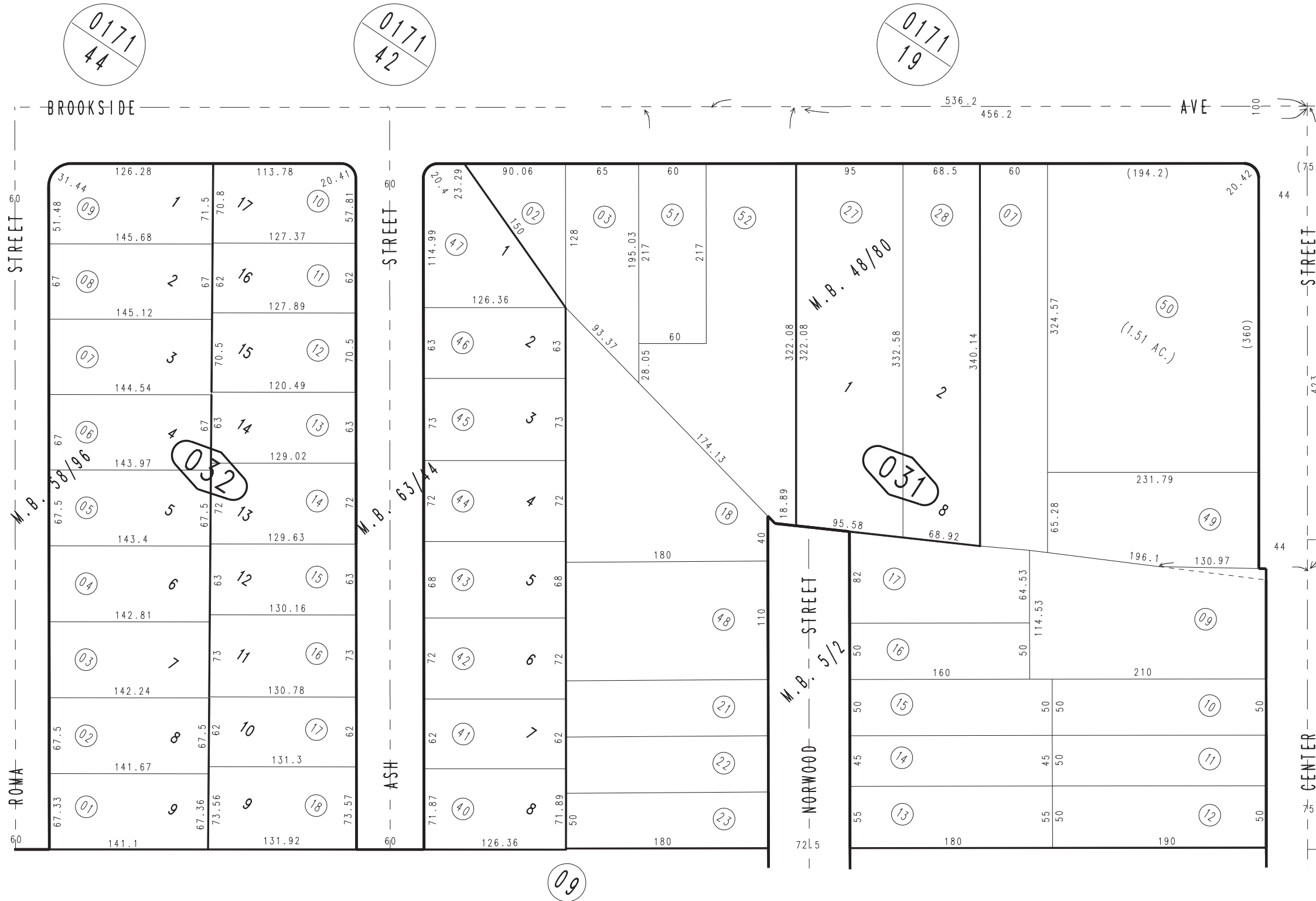


THIS MAP IS FOR THE PURPOSE OF AD VALOREM TAXATION ONLY.

Ptn. 2nd. Preliminary Map of Redlands M.B. 5/2

City of Redlands
Tax Rate Area
5000

0172 - 03



Brookside Terrace Unit No. 3, Tract No. 4940, M.B. 63/44
Ptn. Brookside Terrace Unit No. 2 Tract No. 4787 M.B. 58/96
Brookside Sub. Tract No. 3756 M.B. 48/80

Assessor's Map
Book 0172 Page 03
San Bernardino County