

THIS MAP IS FOR THE PURPOSE OF AD VALOREM TAXATION ONLY.

Tract No. 3846, M.B. 54/1

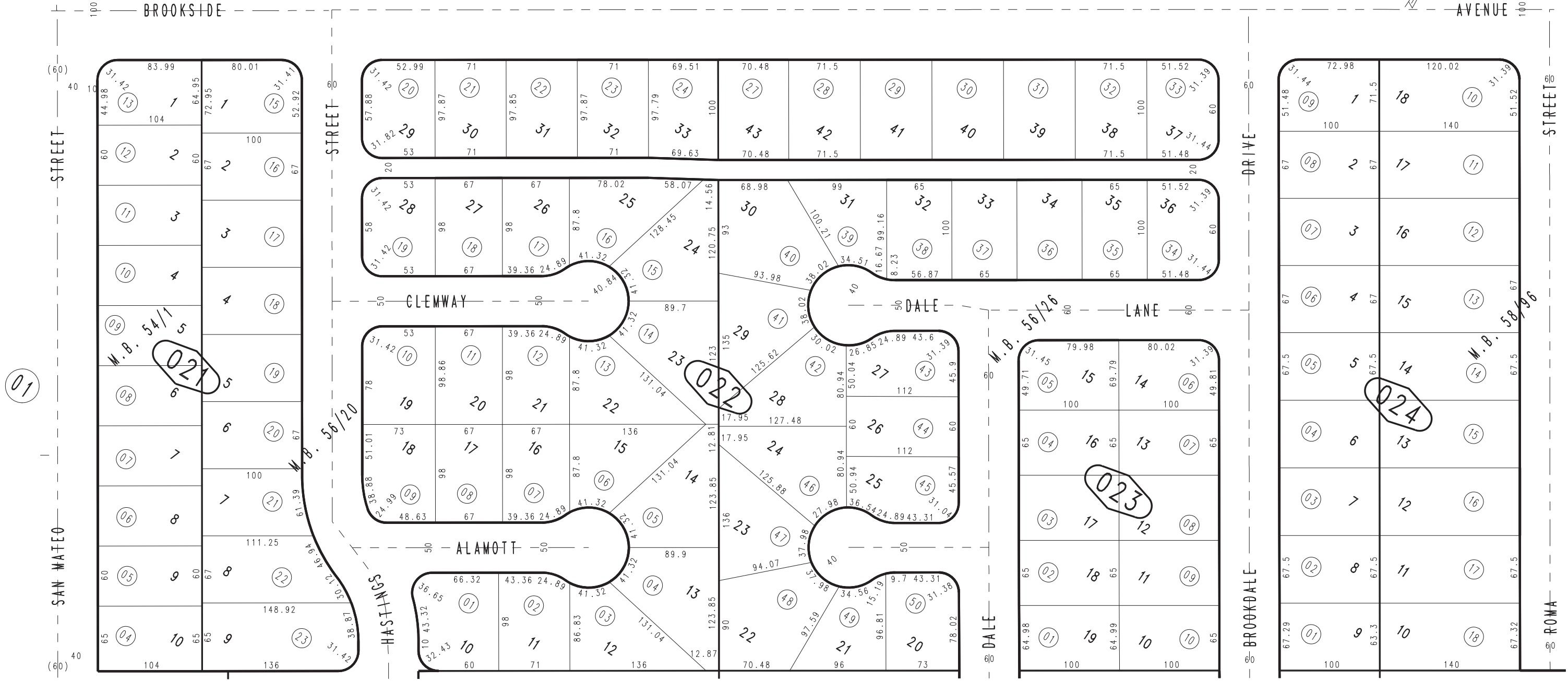
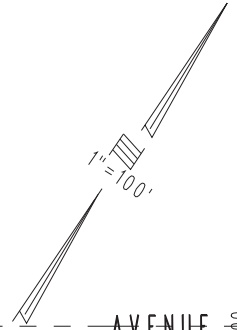
City of Redlands
Tax Rate Area
5000

0172 - 02



0171
40

0171
44



Pln. Tract No. 4787, Brookside Terrace Sub. Unit No. 2, M.B. 58/96
Tract No. 4494, Brookside Terrace, M.B. 56/26
Tract No. 4484, Brookside Garden, Unit No. 2, M.B. 56/20

December 2003

Assessor's Map
Book 0172 Page 02
San Bernardino County

REVISED