

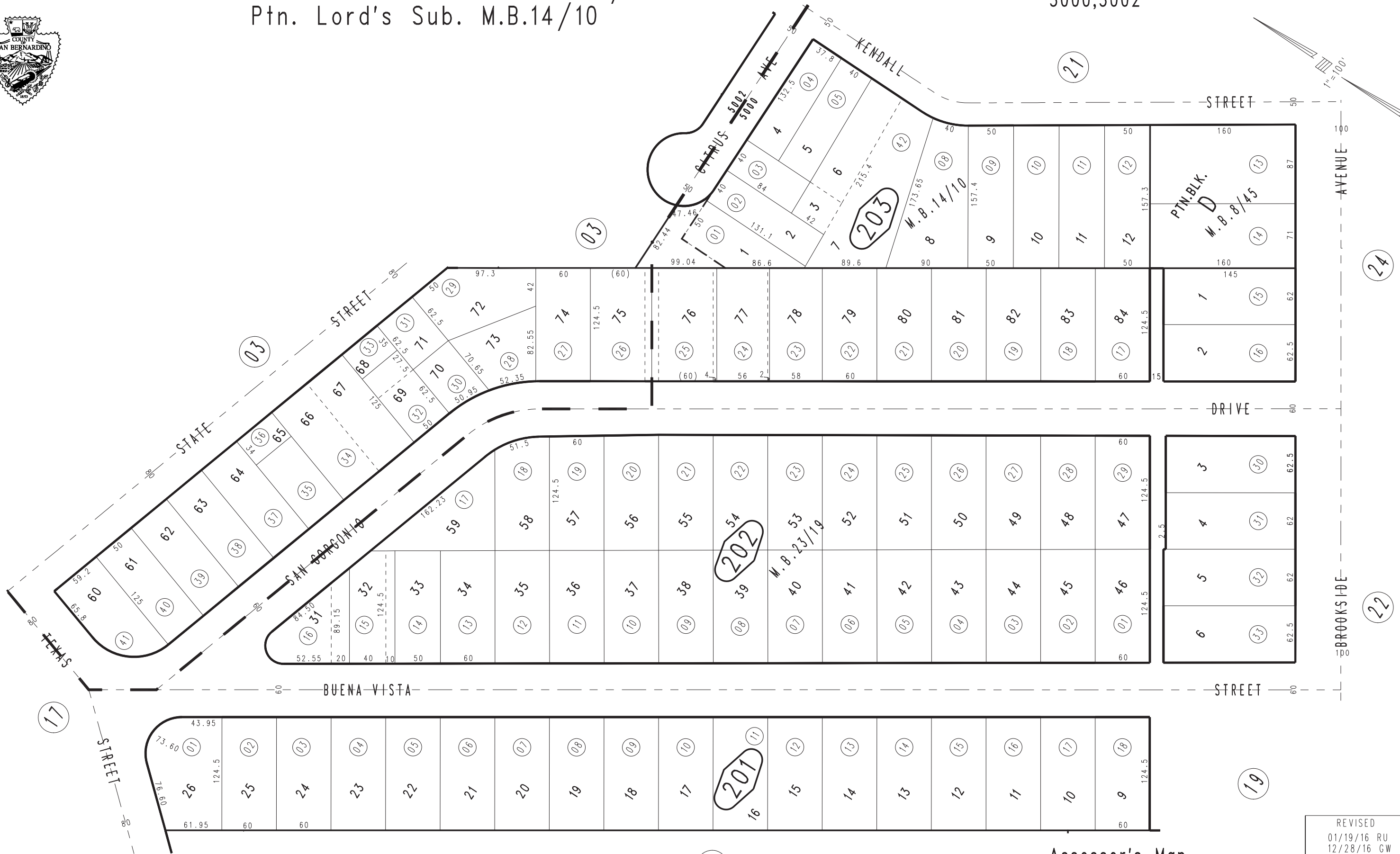
THIS MAP IS FOR THE PURPOSE OF AD VALOREM TAXATION ONLY.



Ptn. Moore & Woodworth Brookside Sub. M.B.23/19
Ptn. Peller Sub. No.2 M.B.8/45
Ptn. Lord's Sub. M.B.14/10

City of Redlands
Tax Rate Area
5000,5002

0171 - 20



REVISED
01/19/16 RU
12/28/16 GW