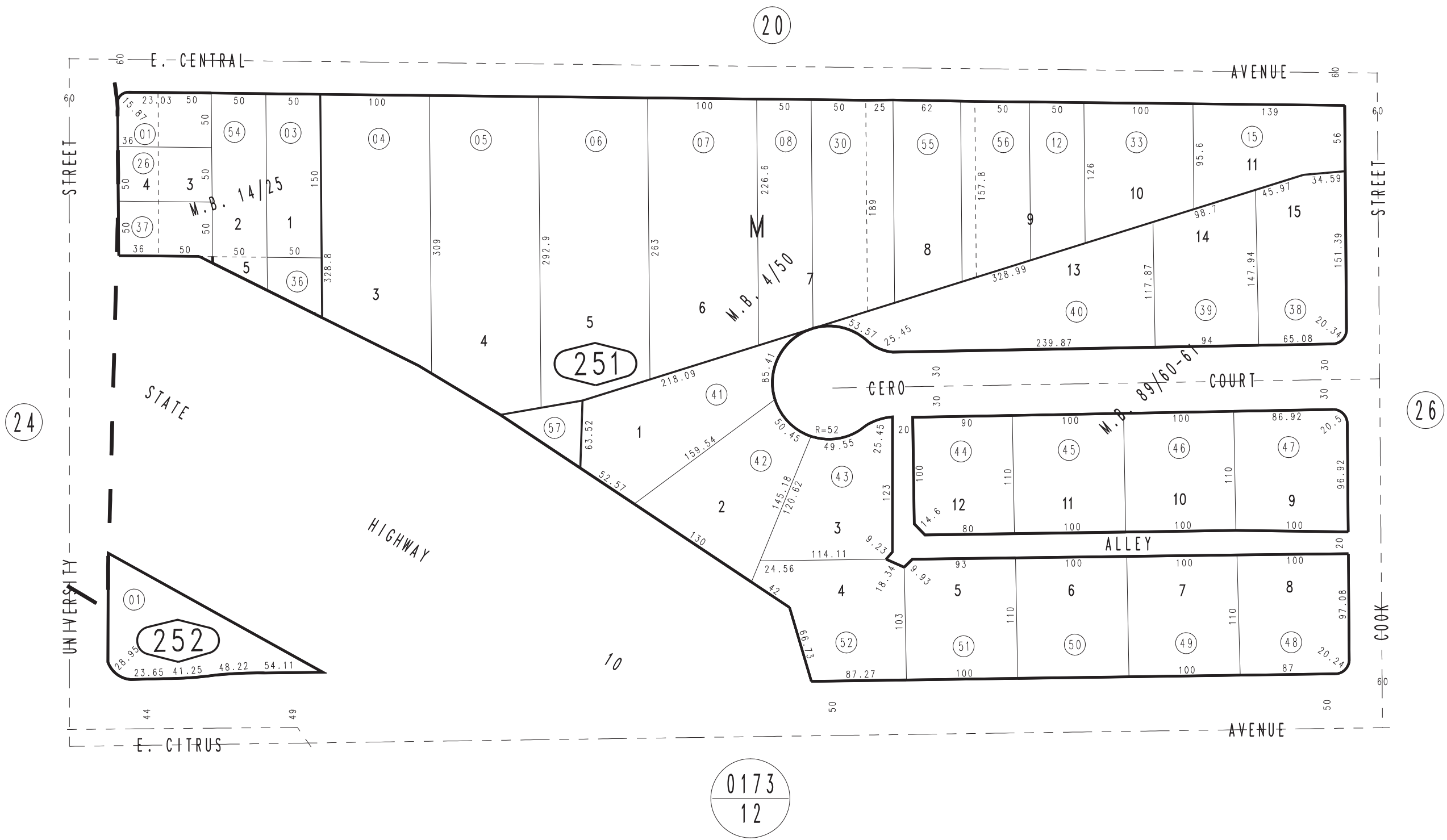


THIS MAP IS FOR THE PURPOSE OF AD VALOREM TAXATION ONLY.

Ptn. Lugonia Park. M.B. 4/50

City of Redlands
Tax Rate Area
5000

0170 - 25



November 2003

Tract No. 6932, M.B. 89/60-61
Bowles Tract. M.B. 14/25

Ptn. N. 1/2, Sec. 26
T.1S., R.3W.

Assessor's Map
Book 0170 Page 25
San Bernardino County

REVISED
04/05/12 BK-MC