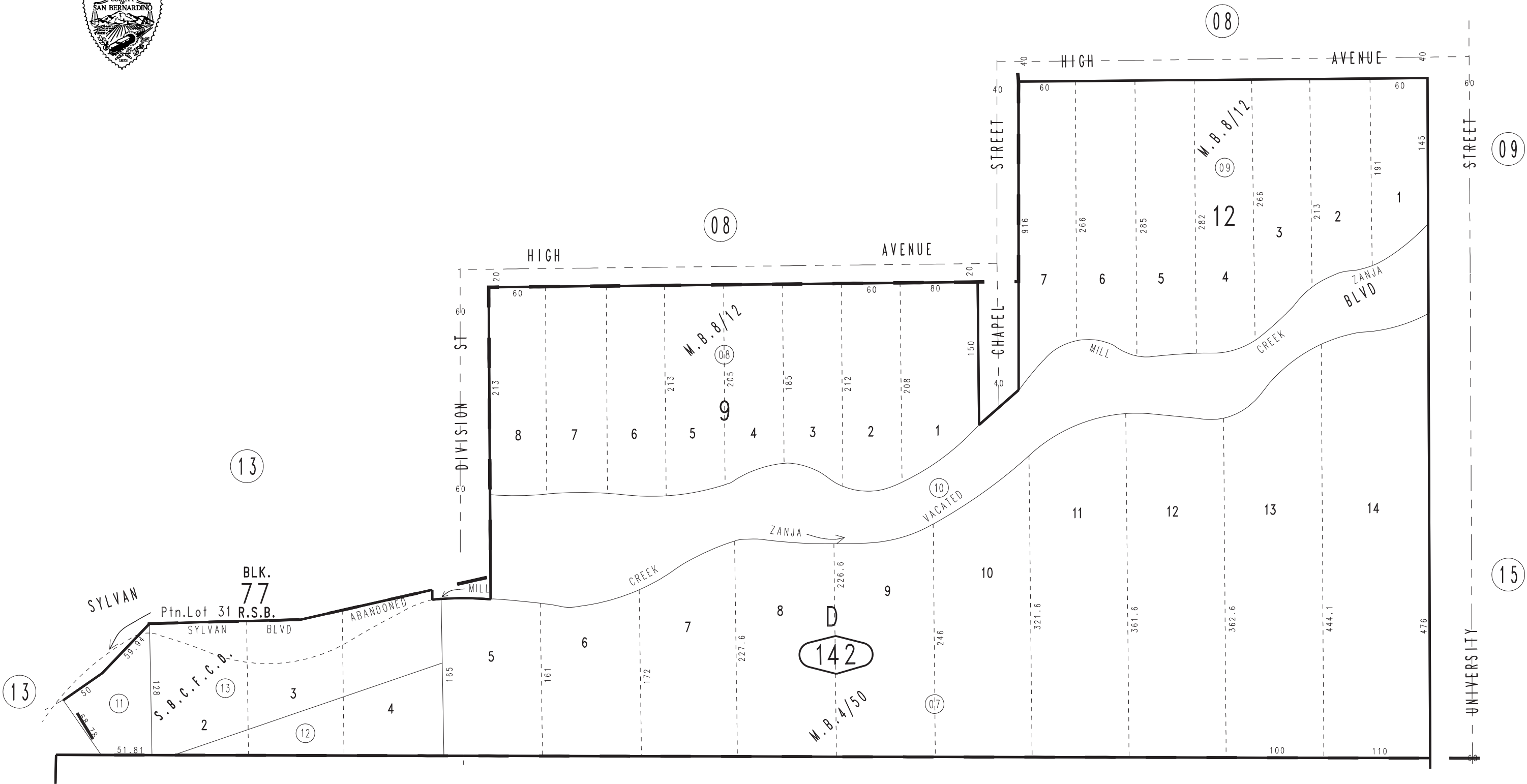


THIS MAP IS FOR THE PURPOSE
OF AD VALOREM TAXATION ONLY.

Ptn. Rancho San Bernardino M.B. 7/2

City of Redlands
Tax Rate Area
5000

0170 - 14



November 2003

Ptn. Lugonia Heights. M.B. 8/12
Ptn. Lugonia Park. M.B. 4/50

Ptn. N.W.1/4, Sec. 26
T.1S., R.3W.

Assessor's Map
Book 0170 Page 14
San Bernardino County

REVISED
07/22/14 RM-MC