

THIS MAP IS FOR THE PURPOSE OF AD VALOREM TAXATION ONLY.

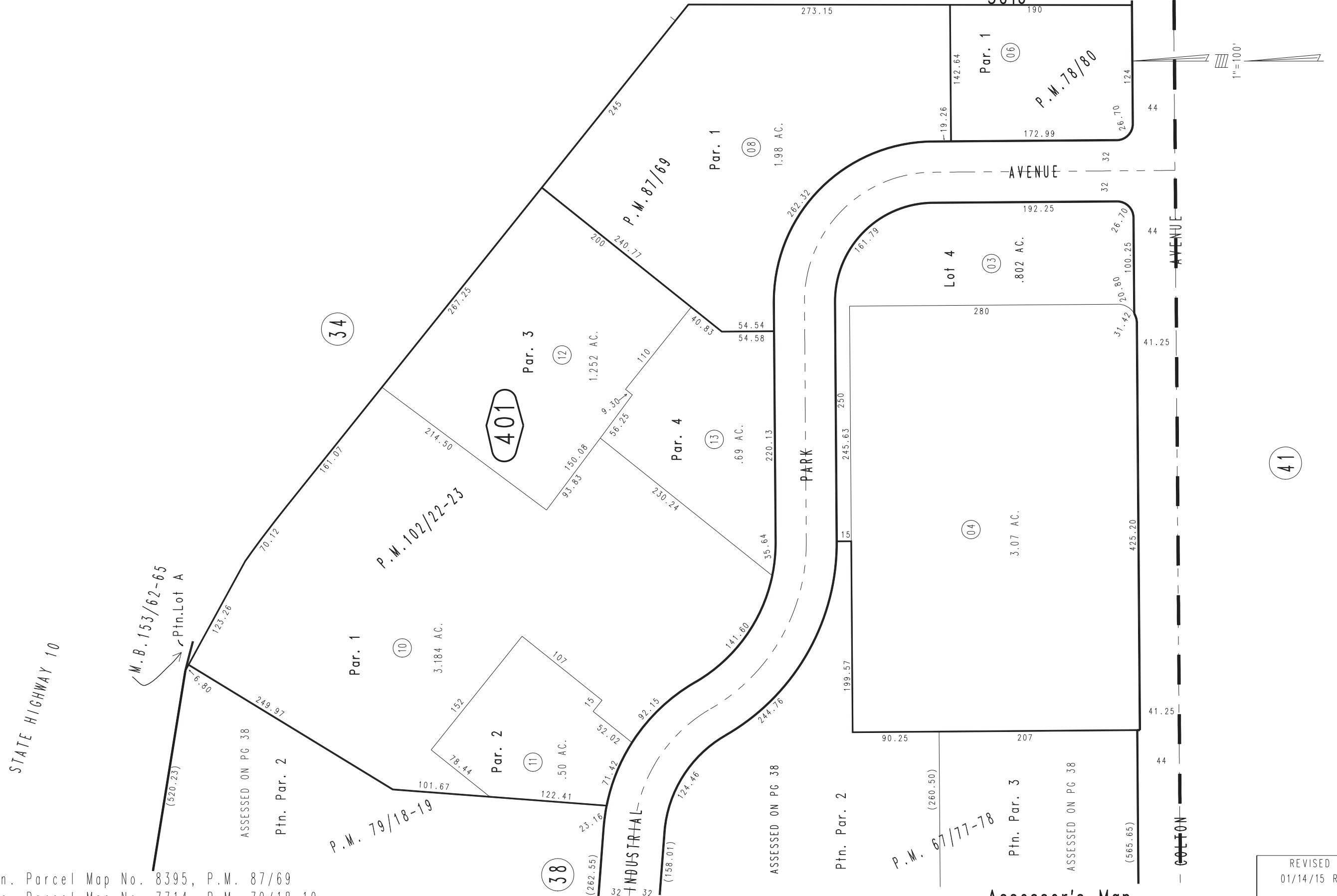


Ptn. E.1/2, S.W.1/2 Sec. 21, T.1S., R.3W.

34

City of Redlands
Tax Rate Area
5016

0169 - 40



Ptn. Parcel Map No. 8395, P.M. 87/69
 Ptn. Parcel Map No. 7714, P.M. 79/18-19
 Ptn. Parcel Map No. 7586, P.M. 78/80
 Ptn. Parcel Map No. 6965, P.M. 67/77-78 Parcel Map No. 9441, P.M. 102/22-23

Assessor's Map
 Book 0169 Page 40
 San Bernardino County

REVISED
 01/14/15 RU