

THIS MAP IS FOR THE PURPOSE
OF AD VALOREM TAXATION ONLY.

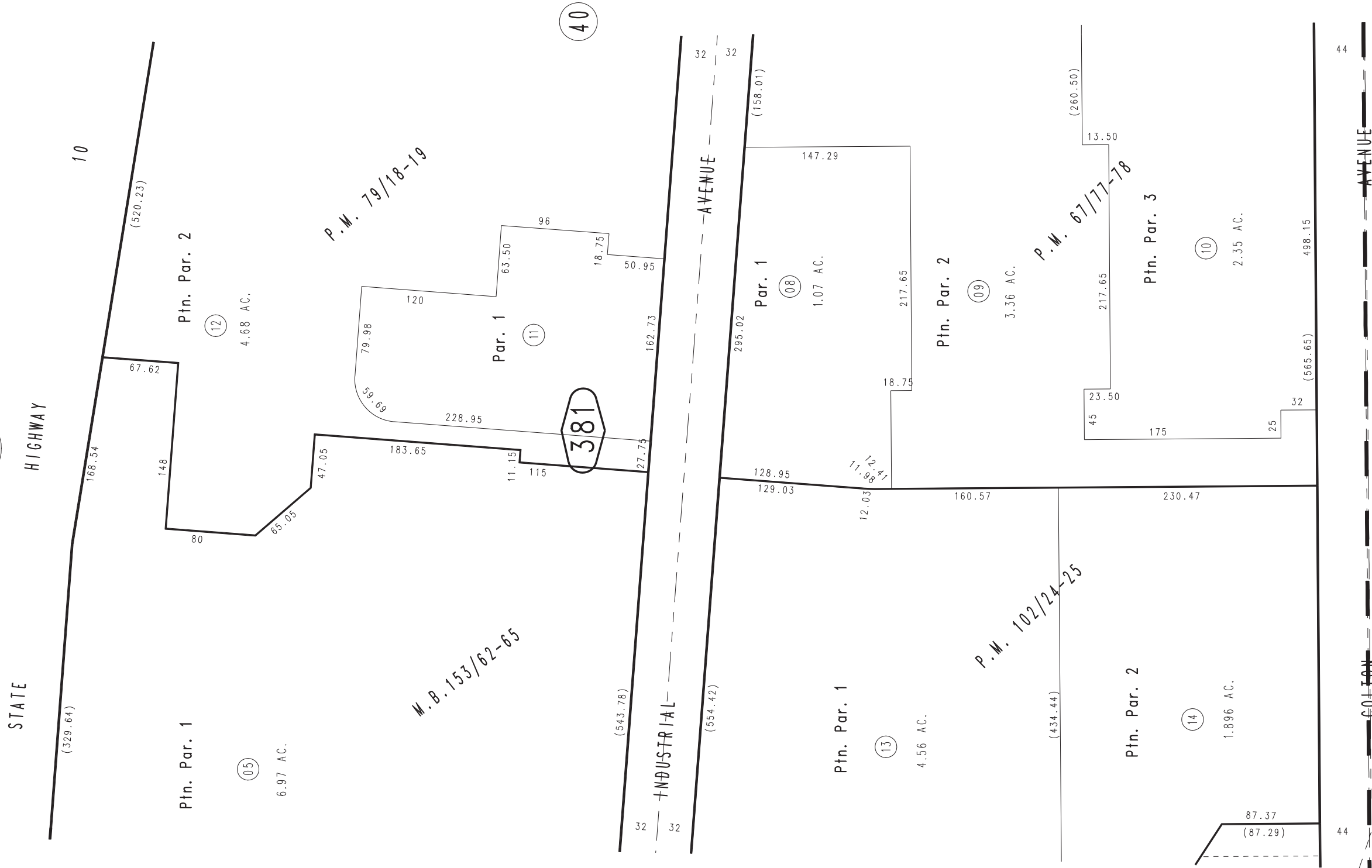
Ptn. S.W.1/4 S.W.1/4 Sec.21, T.1S R.3W, S.B.&M.

City of Redlands
Tax Rate Area
5016

0169 - 38



0292
44



41

39

37

Ptn. Tract Map No. 11451, M.B. 153/62-65
Ptn. Parcel Map No. 9466, P.M. 102/24-25
Ptn. Parcel Map No. 7714, P.M. 79/18-19
Ptn. Parcel Map No. 6965, P.M. 67/77-78

SEPT. 1980

Assessor's Map
Book 0169 Page 38
San Bernardino County

REVISED
12/29/09 LH