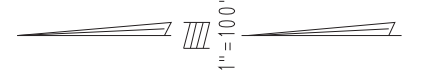


THIS MAP IS FOR THE PURPOSE OF AD VALOREM TAXATION ONLY.

Ptn. S.W.1/4 S.W.1/4 Sec.21, T.1S R.3W, S.B.&M.

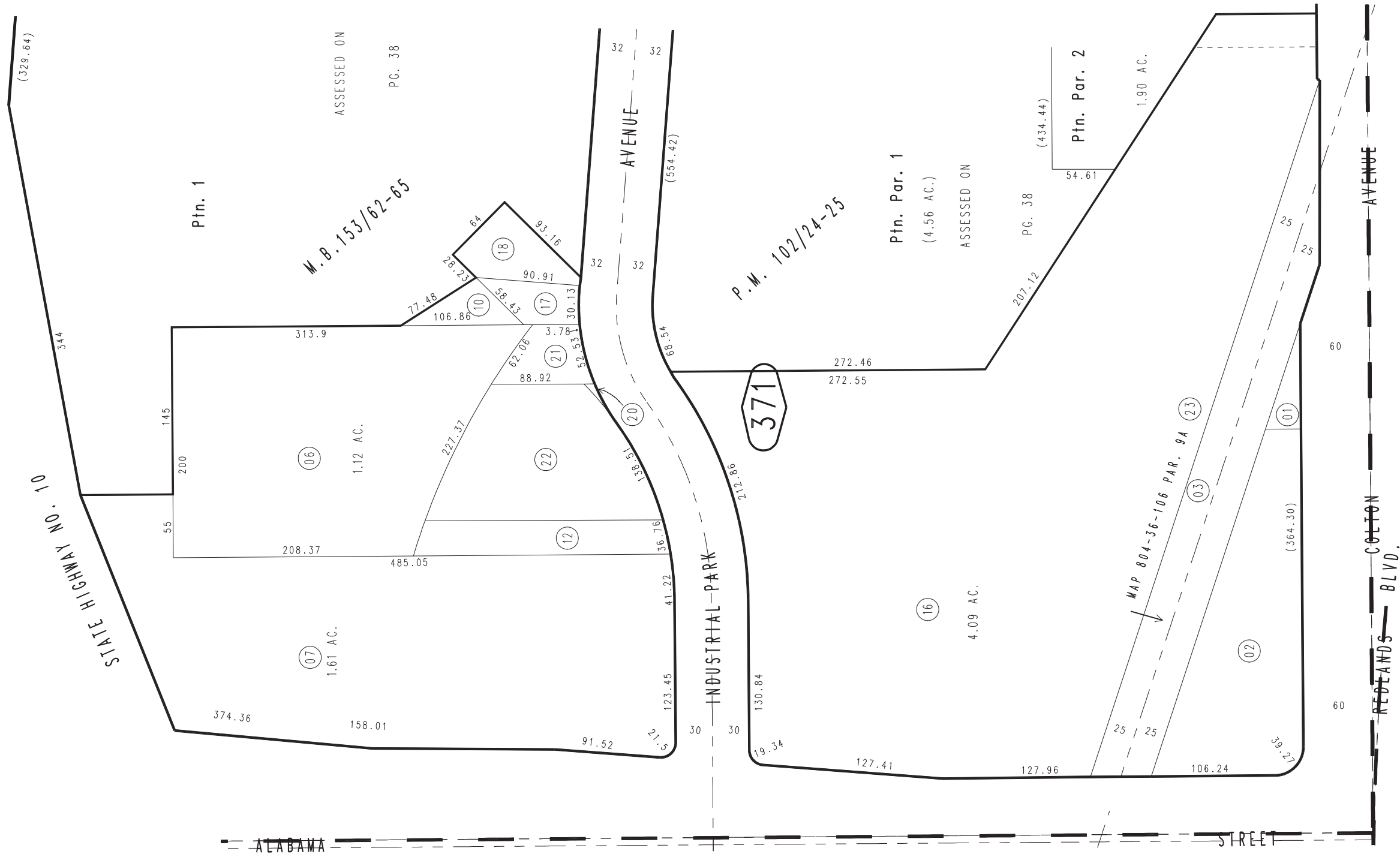
City of Redlands
Tax Rate Area
5016

0169 - 37



0292
25

0292
18



SEPT. 1980

Ptn. Tract Map No. 11451, M.B. 153/62-65
Ptn. Parcel Map No. 9466, P.M. 102/24-25

Assessor's Map
Book 0169 Page 37
San Bernardino County

REVISED
05/12/23 XM-MC

38

371

36