

THIS MAP IS FOR THE PURPOSE OF AD VALOREM TAXATION ONLY.

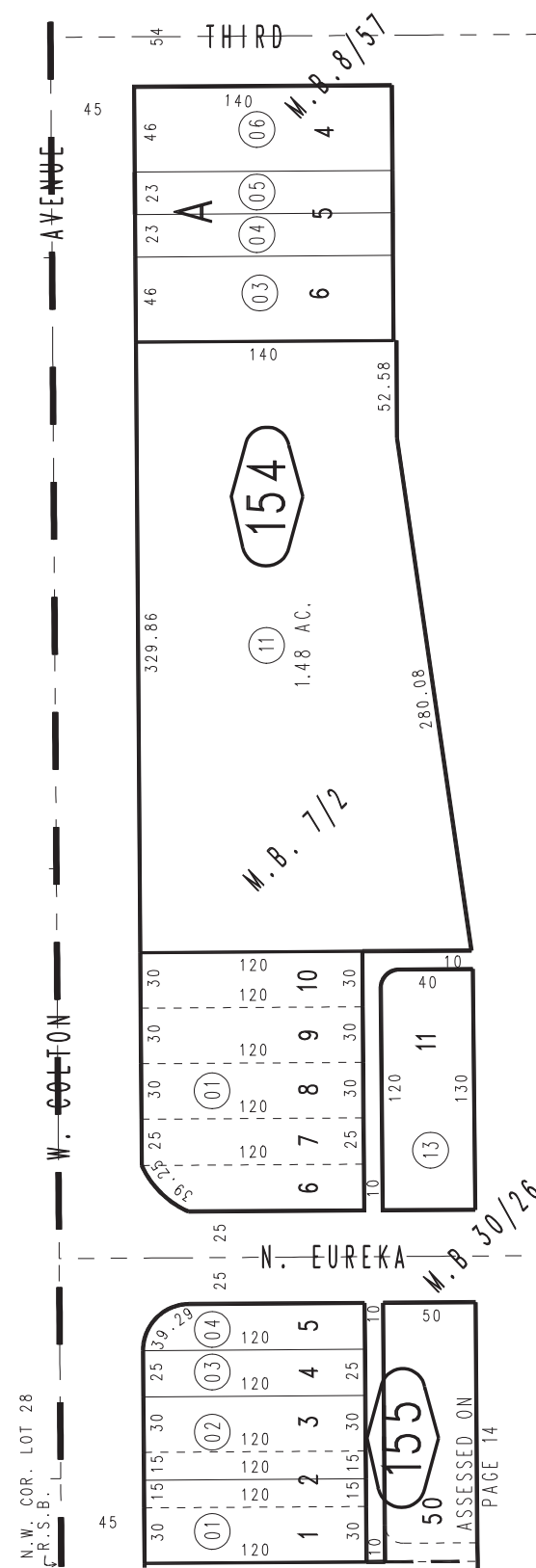


Ptn. Rancho San Bernardino, M.B. 7/2

City of Redlands
Tax Rate Area
5002

0169 - 15

05

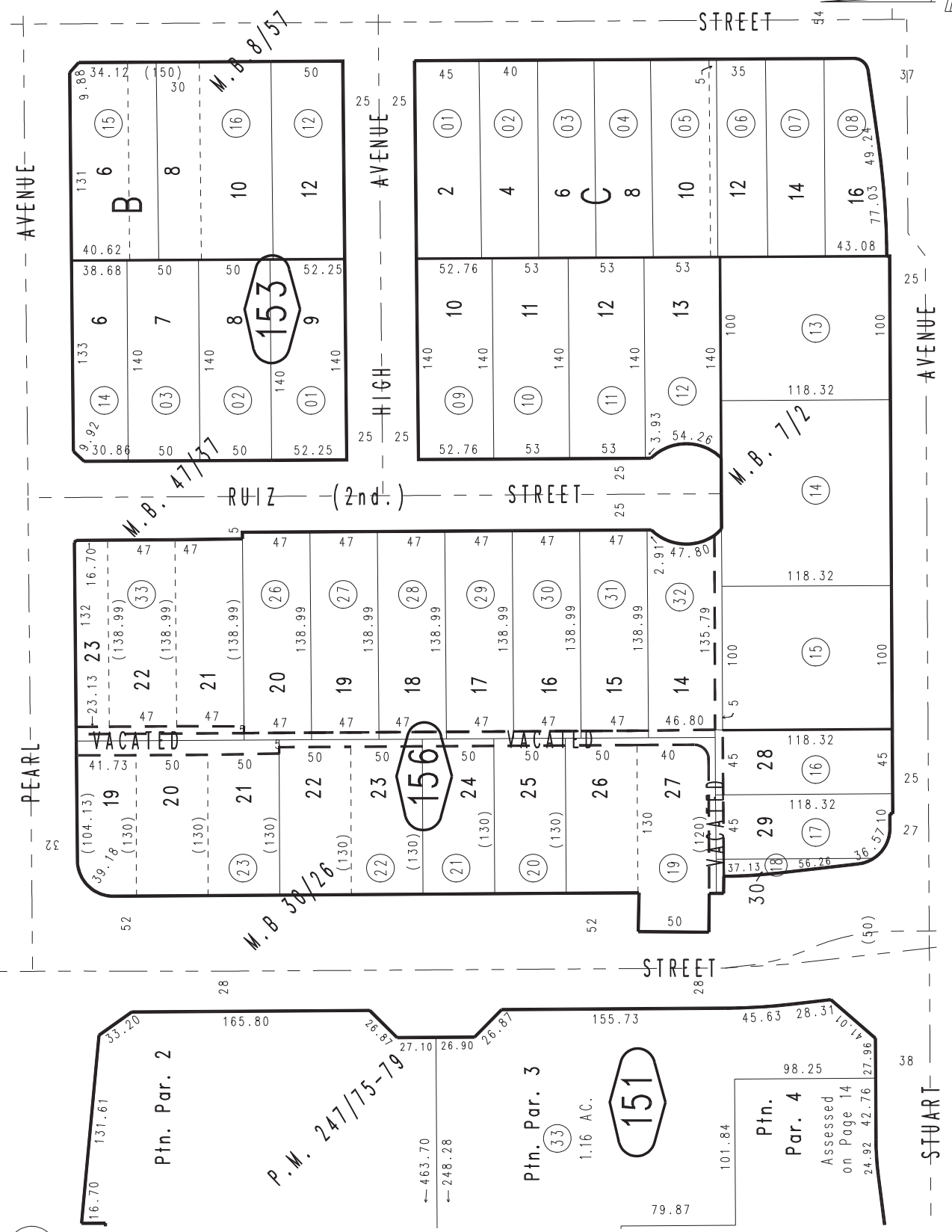


Ptn. Parcel Map No. 18536-1, P.M. 247/75-79
 Tract No. 3632 Kronage Sub., M.B. 47/37
 Ptn. Tract No. 2083 Rogers Terrace, M.B. 30/26
 Ptn. Central Townsite, M.B. 8/57

OCT. 1949

14

20



Ptn. N.1/2, Sec. 27
 T.1S., R.3W.

Assessor's Map
 Book 0169 Page 15
 San Bernardino County

28

REVISED
 05/17/23 KA
 07/10/24 KC