

THIS MAP IS FOR THE PURPOSE OF AD VALOREM TAXATION ONLY.

Smith Tract, M.B. 8/86

City of Redlands
Tax Rate Area
5002 5068

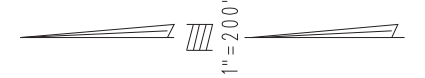
0169 - 02



0167
23

0167
28

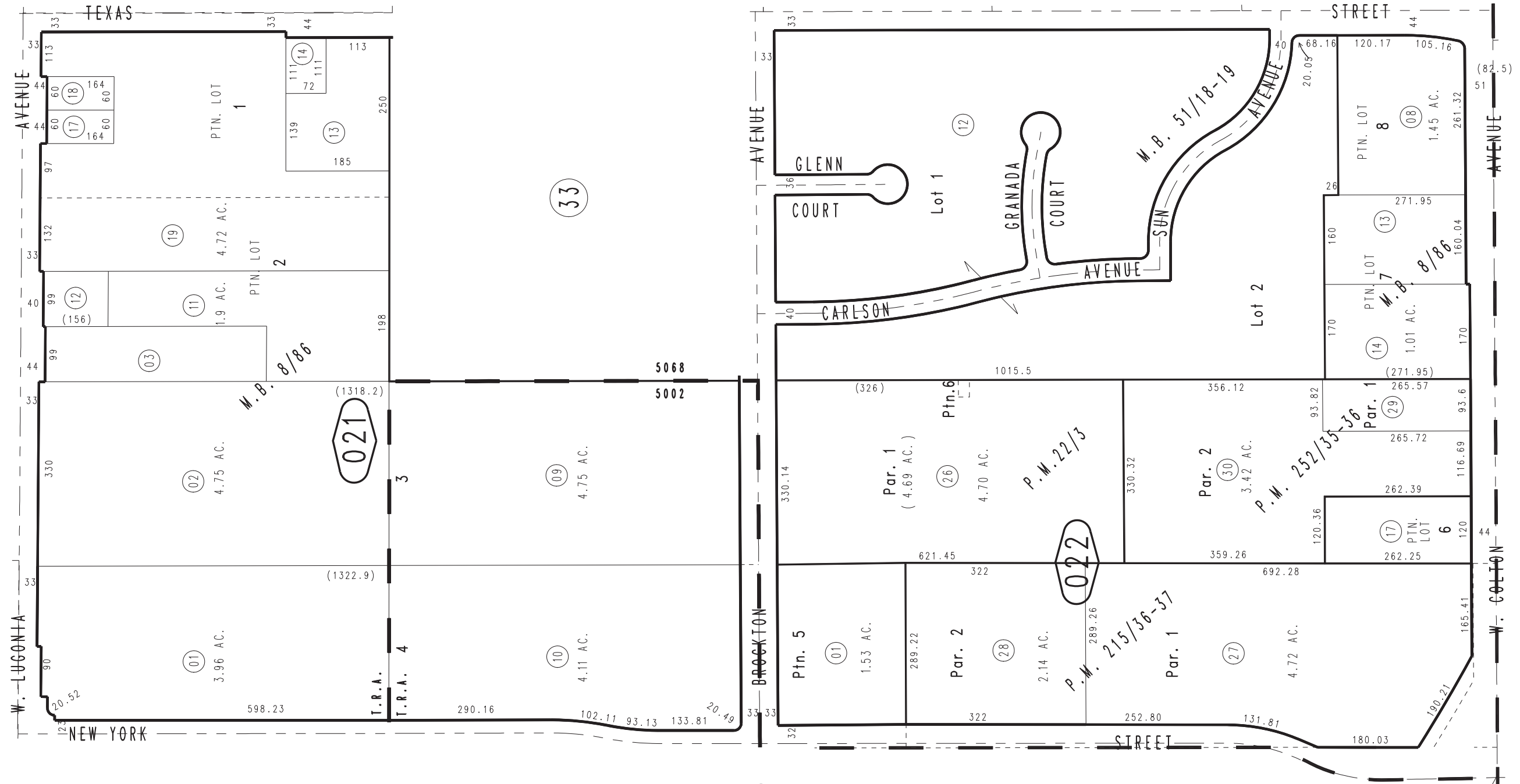
03



0167
17

0167
34

0167
17



01

12

Parcel Map No. 19887, P.M. 252/35-36
Tract No. 4029, M.B. 51/18-19
Parcel Map No. 16515, P.M. 215/36-37
Parcel Map No. 1762, P.M. 22/3

SEPT. 1949

Ptn. S.E.1/4, Sec. 21
T.1S., R.3W.

Assessor's Map
Book 0169 Page 02
San Bernardino County

REVISED
09/09/19 KA