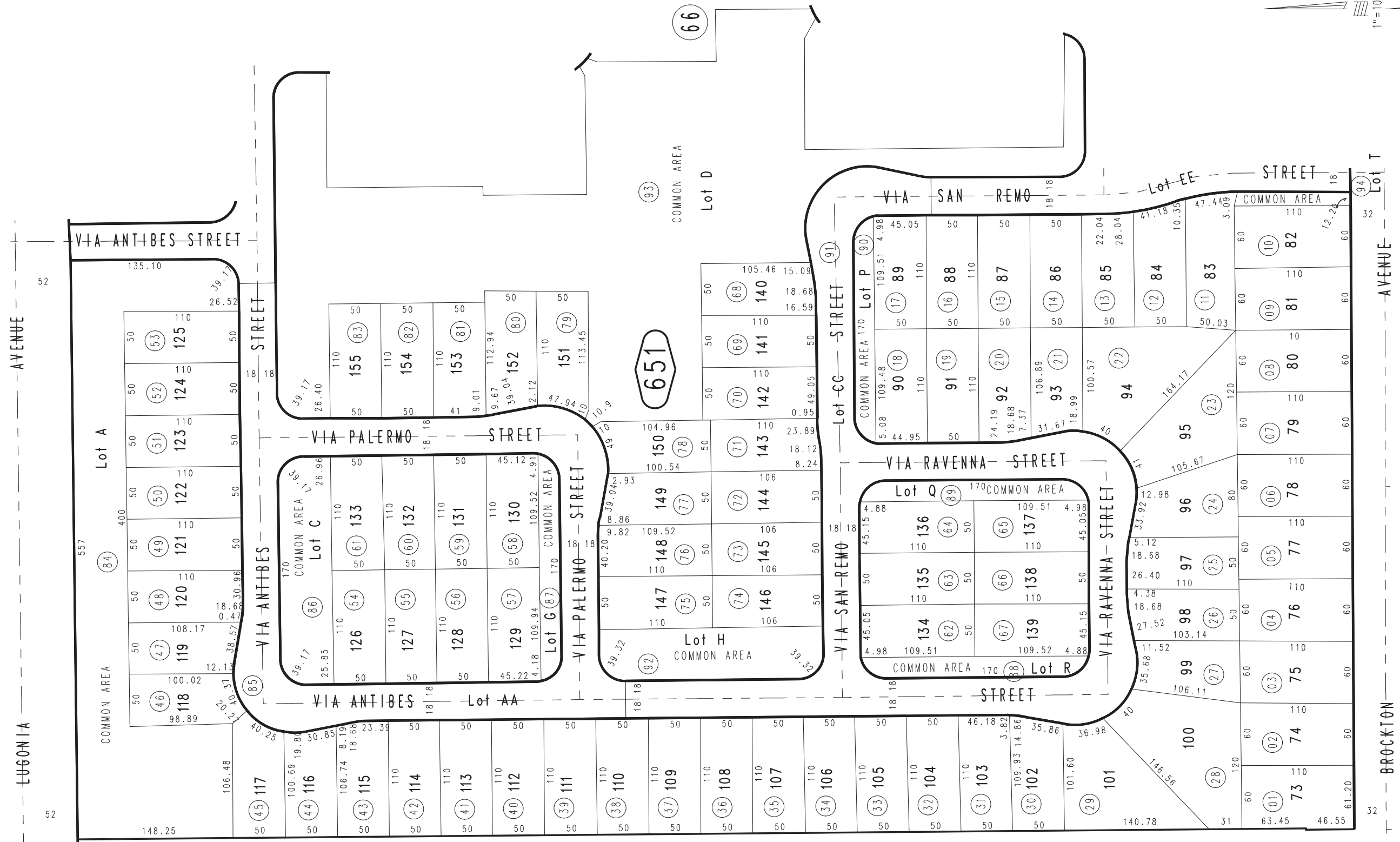


THIS MAP IS FOR THE PURPOSE
OF AD VALOREM TAXATION ONLY.

Ptn. Tract No. 13276, M.B. 194/72-79

City of Redlands
Tax Rate Area
5000

0168 - 65



79

70

69

MAY 1989

Ptn. S.E.1/4, Sec. 24
T.1S., R.3W.

Assessor's Map
Book 0168 Page 65
San Bernardino County

REVISED
08/05/11 RM