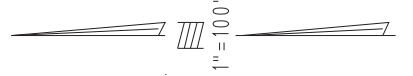


THIS MAP IS FOR THE PURPOSE OF AD VALOREM TAXATION ONLY.

Ptn. S.1/2, S.W.1/4, Sec. 24, T.1S., R.3W., S.B.M.

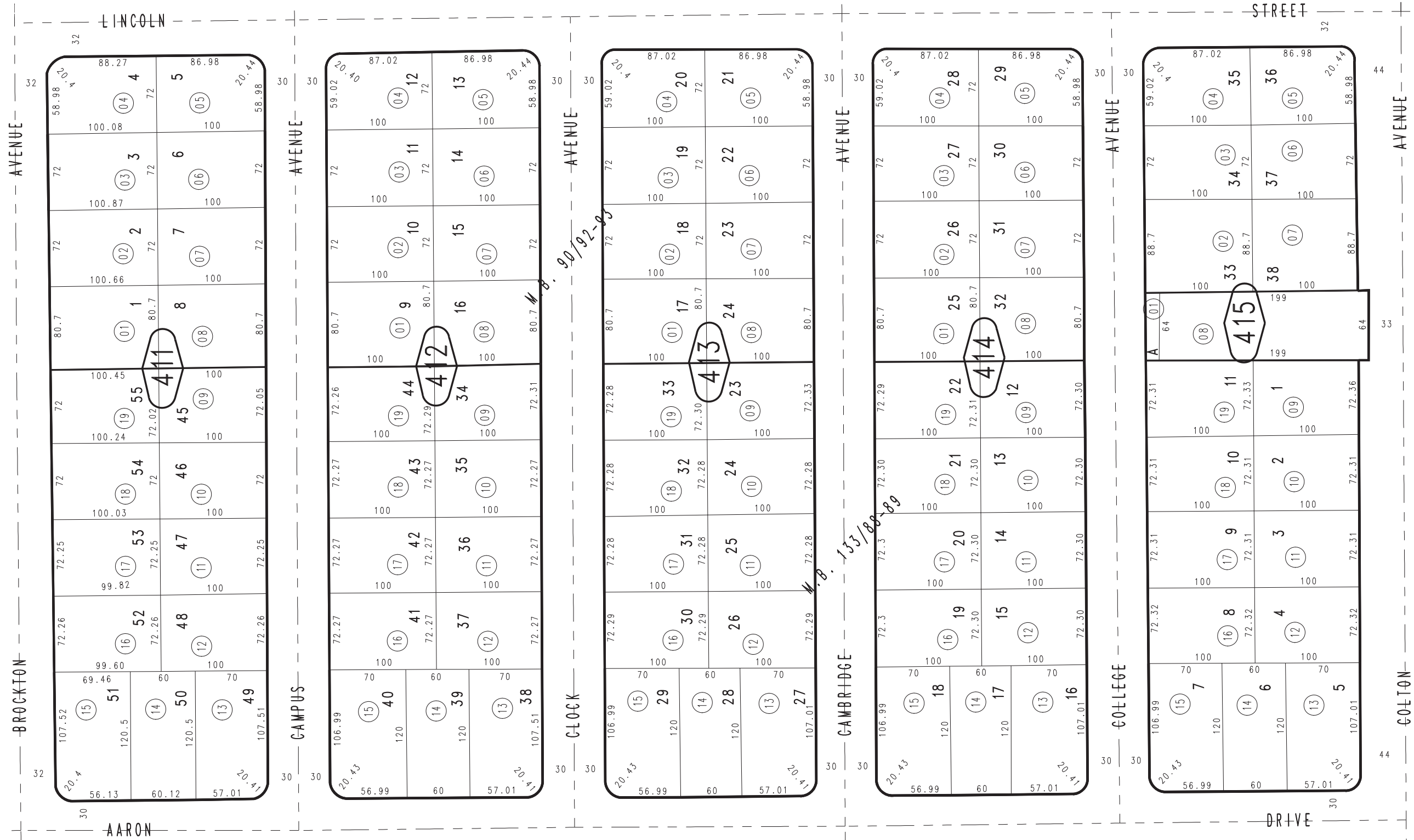
City of Redlands
Tax Rate Area
5000

0168 - 41



52

46



MAY 1989

Tract No. 9538, M.B. 133/88-89
Tract No. 7014, M.B. 90/92-93

Assessor's Map
Book 0168 Page 41
San Bernardino County

REVISED
12/29/09 LH