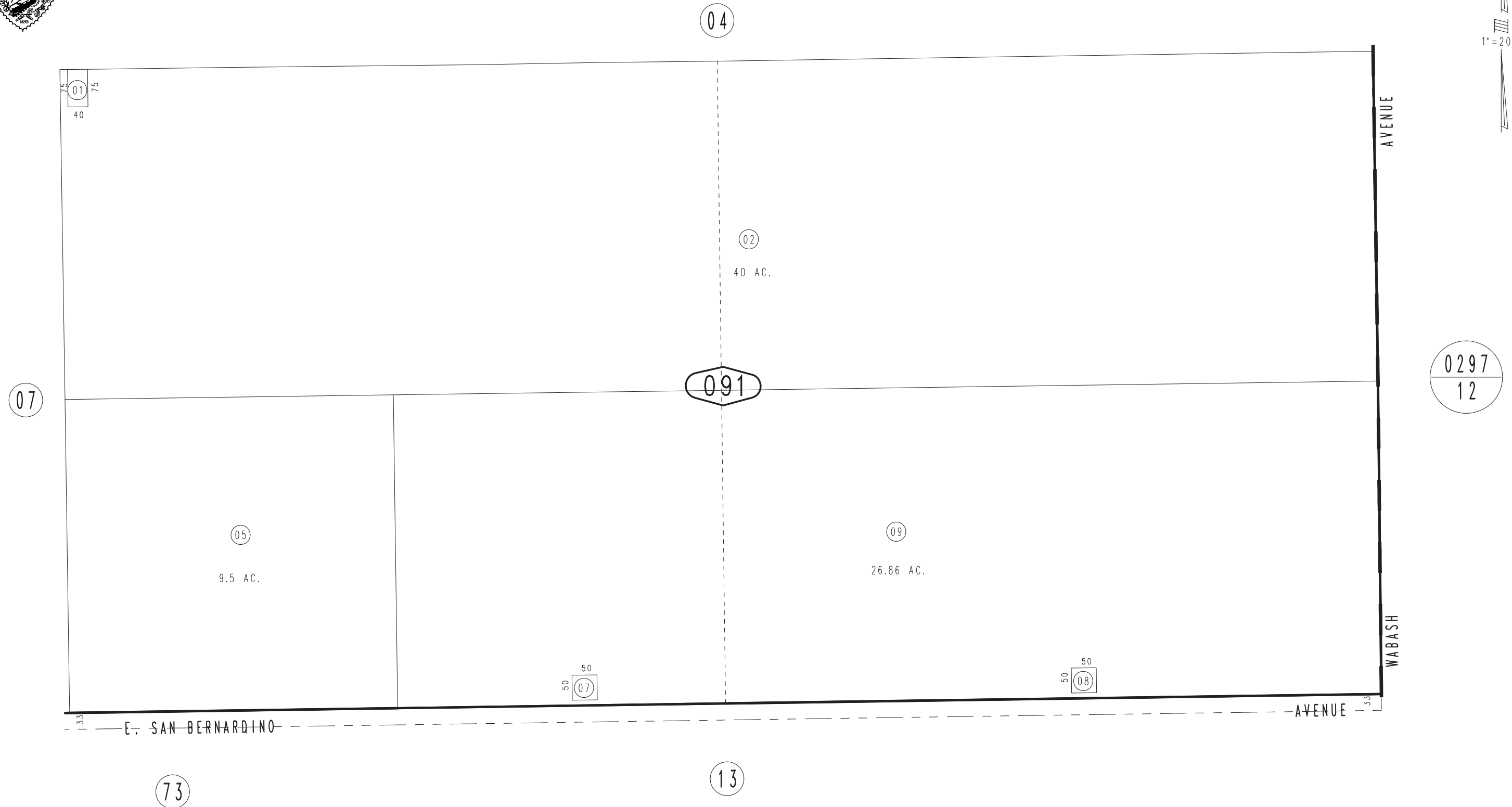


THIS MAP IS FOR THE PURPOSE
OF AD VALOREM TAXATION ONLY.

S.1/2, S.E.1/4, Sec. 13, T.1S., R.3W., S.B.M.

City of Redlands
Tax Rate Area
5000

0168 - 09



MAY 1989

Assessor's Map
Book 0168 Page 09
San Bernardino County

REVISED
12/29/09 LH