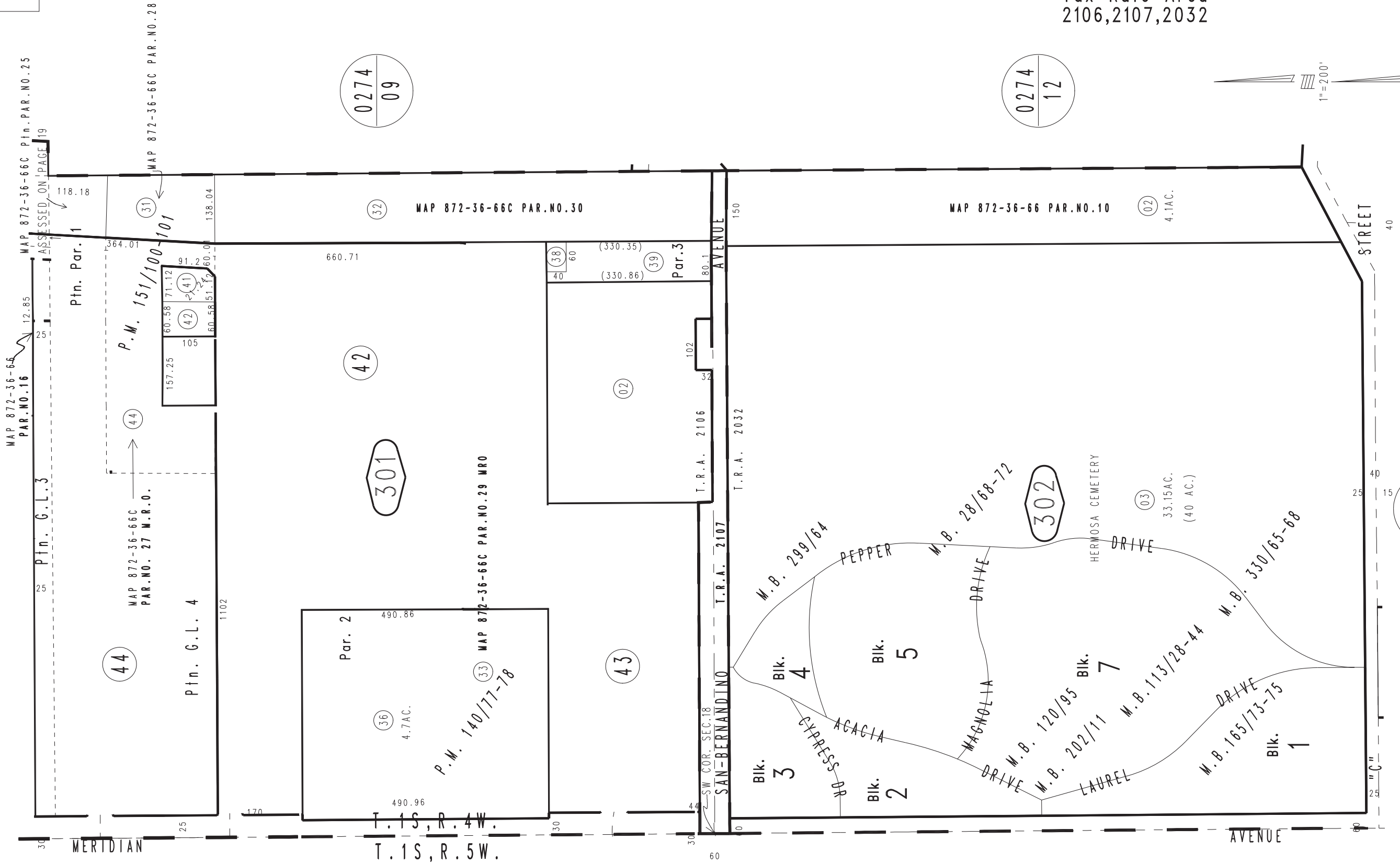
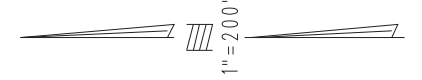


THIS MAP IS FOR THE PURPOSE OF AD VALOREM TAXATION ONLY.

Ptn. S.1/2 Sec.18, T.1S.,R.4W., S.B.B.&M.

City Of Colton
Tax Rate Area
2106,2107,2032

0160 - 30



40

0274
09

0274
12

0162
28

0250
21

0254
08

Tract No. 16784, Hermosa Cemetery, M.B.299/64
Tract No. 13710, Hermosa Cemetery, M.B.202/11
Tract No. 12301, Hermosa Cemetery, M.B.165/73-75
Tract No. 8895, Hermosa Cemetery, M.B.120/95
Tract No. 8422, Hermosa Cemetery, M.B.113/28-44
Tract No. 1980, Hermosa Cemetery, M.B.28/68-72

Tract No. 18663, Hermosa Gardens Cemetery, M.B. 330/65-68
Ptin. Parcel Map No. 13319, P.M. 151/100-101
Ptin. Parcel Map No. 12677, P.M. 140/77-78

Assessor's Map
Book 0160 Page 30
San Bernardino County

REVISED
03/29/12 BK-MC
06/14/12 KC