

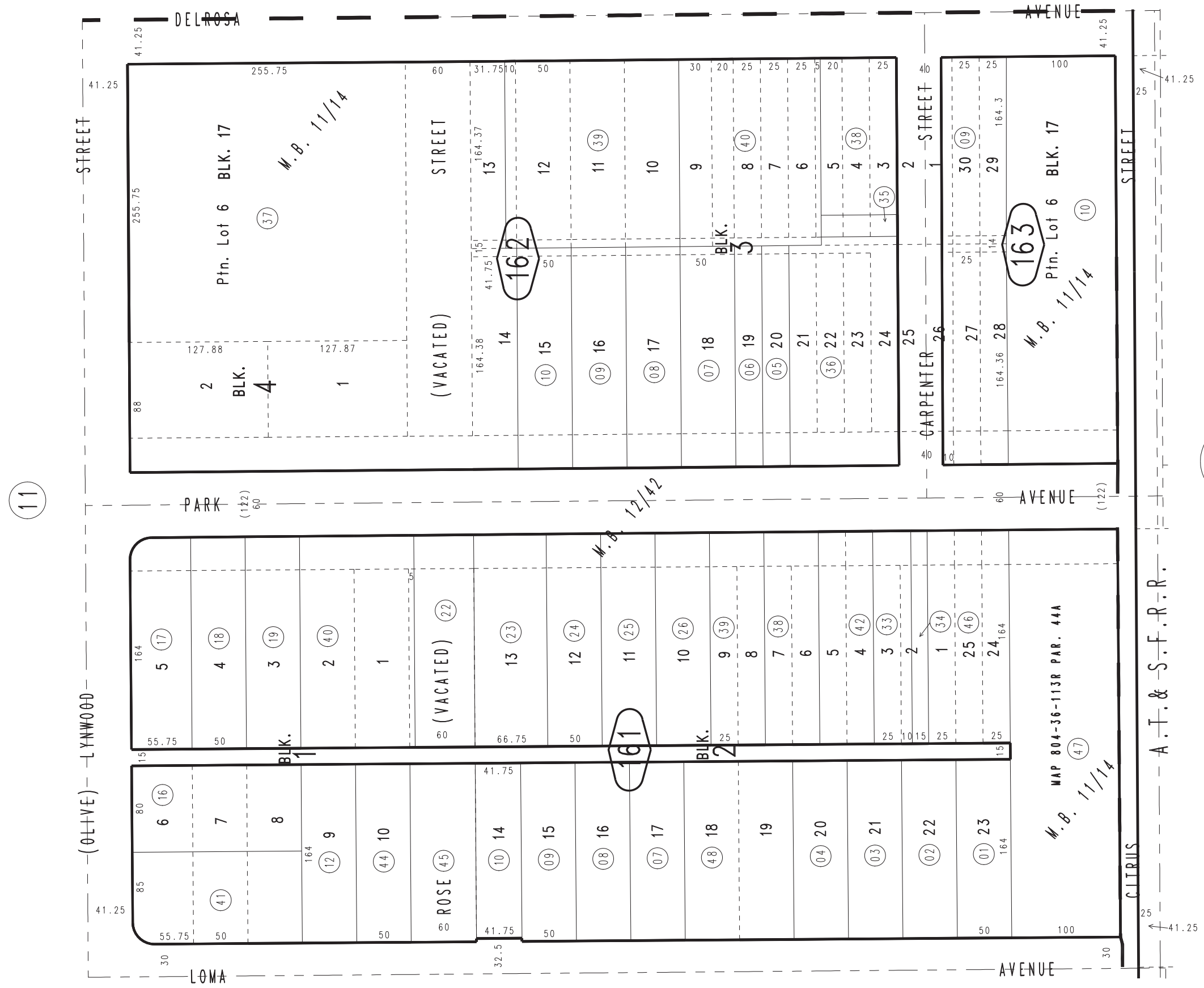
THIS MAP IS FOR THE PURPOSE OF AD VALOREM TAXATION ONLY.



Ptn. Orange Grove Tract, M.B. 11/14
Del Rosa Townsite, M.B. 12/42

0272
09

City of San Bernardino 0155 - 16
Tax Rate Area
7034



11

0272
13

45

Ptn. N.W.1/4, Sec. 25
T.1N., R.4W.

Assessor's Map
Book 0155 Page 16
San Bernardino County

REVISED
07/05/16 GW
07/10/17 GW