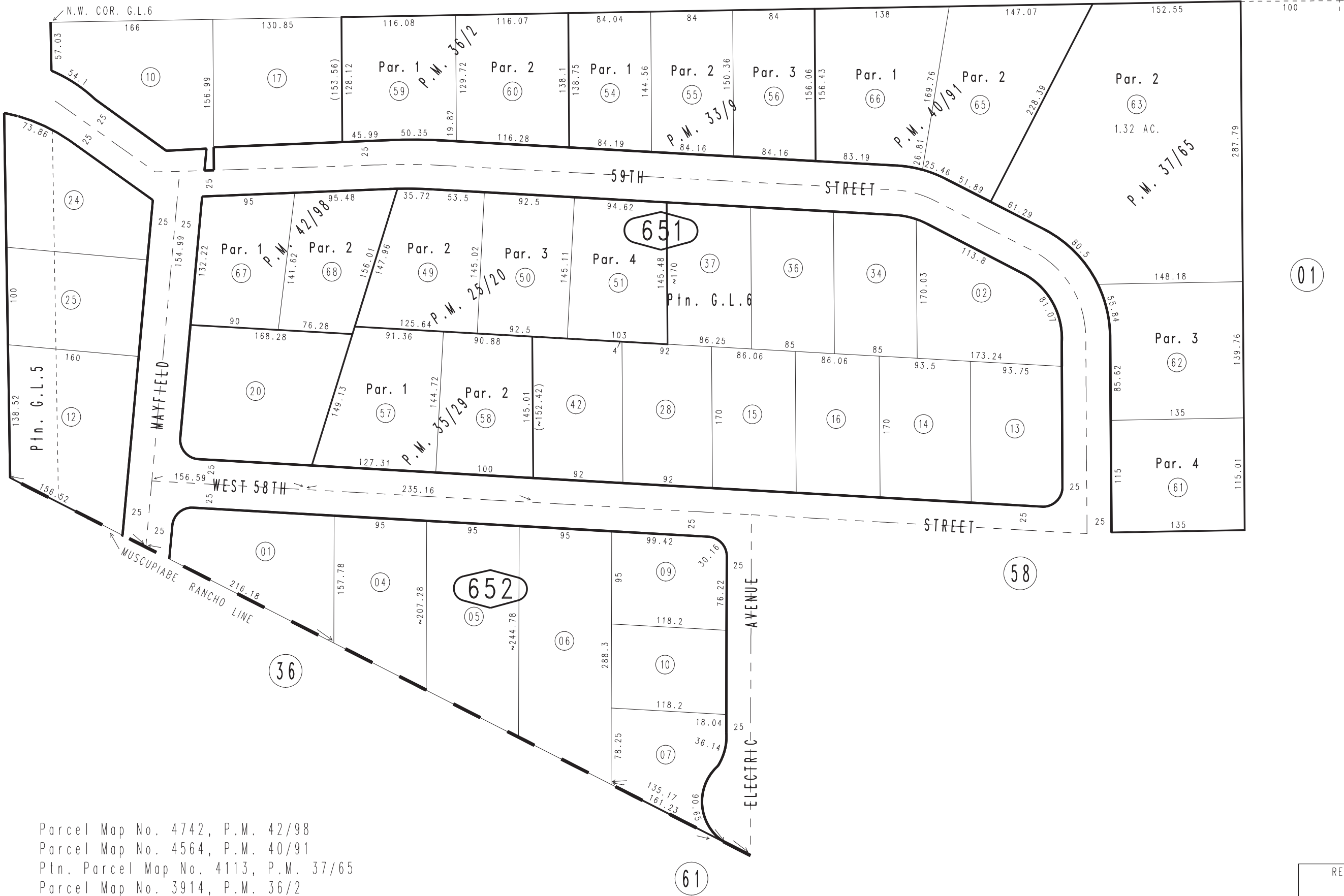


THIS MAP IS FOR THE PURPOSE  
OF AD VALOREM TAXATION ONLY.

# Ptn. Gov't Lots 5&6, Sec.10, T.1N.,R.4W., S.B.B.&M.

City of San Bernardino 0154 - 65  
Tax Rate Area  
7001

N.E. COR. G.L.6



- Parcel Map No. 4742, P.M. 42/98
- Parcel Map No. 4564, P.M. 40/91
- Ptn. Parcel Map No. 4113, P.M. 37/65
- Parcel Map No. 3914, P.M. 36/2
- Parcel Map No. 3920, P.M. 35/29
- Parcel Map No. 3662, P.M. 33/9
- Ptn. Parcel Map No. 2804, P.M. 25/20

February 2005

Assessor's Map  
Book 0154 Page 65  
San Bernardino County

REVISED