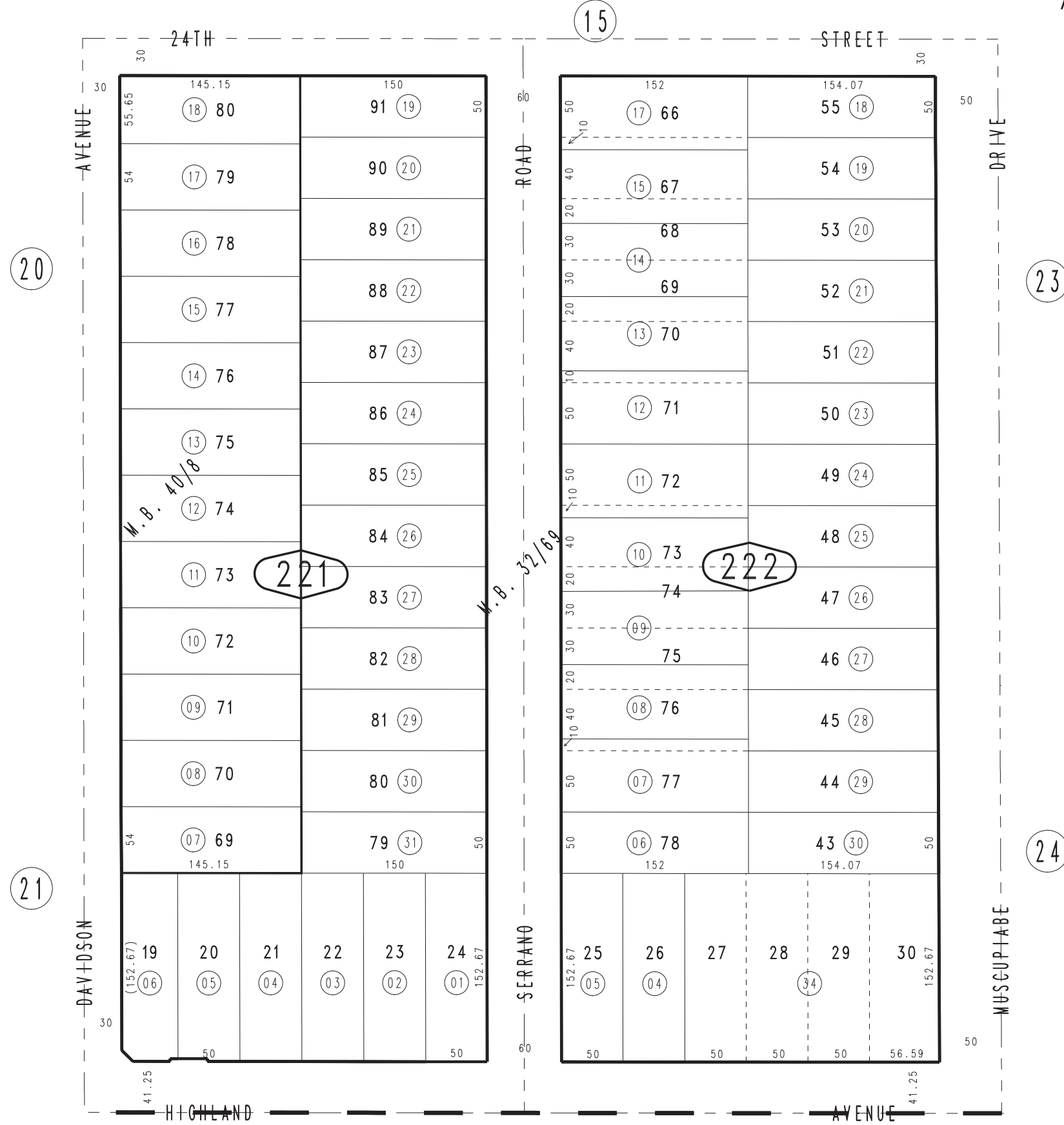


THIS MAP IS FOR THE PURPOSE  
OF AD VALOREM TAXATION ONLY.



Ptn. Cajon Heights Tract No. 2265, M.B. 32/69  
Ptn. Tract No. 2692, M.B. 40/8

City of San Bernardino 0148 - 22  
Tax Rate Area  
7001



0144  
02

Ptn. S.W. 1/4, Sec. 28  
T.1N., R.4W.

Assessor's Map  
Book 0148 Page 22  
San Bernardino County

REVISED  
10/08/09 KC  
12/18/09 RU