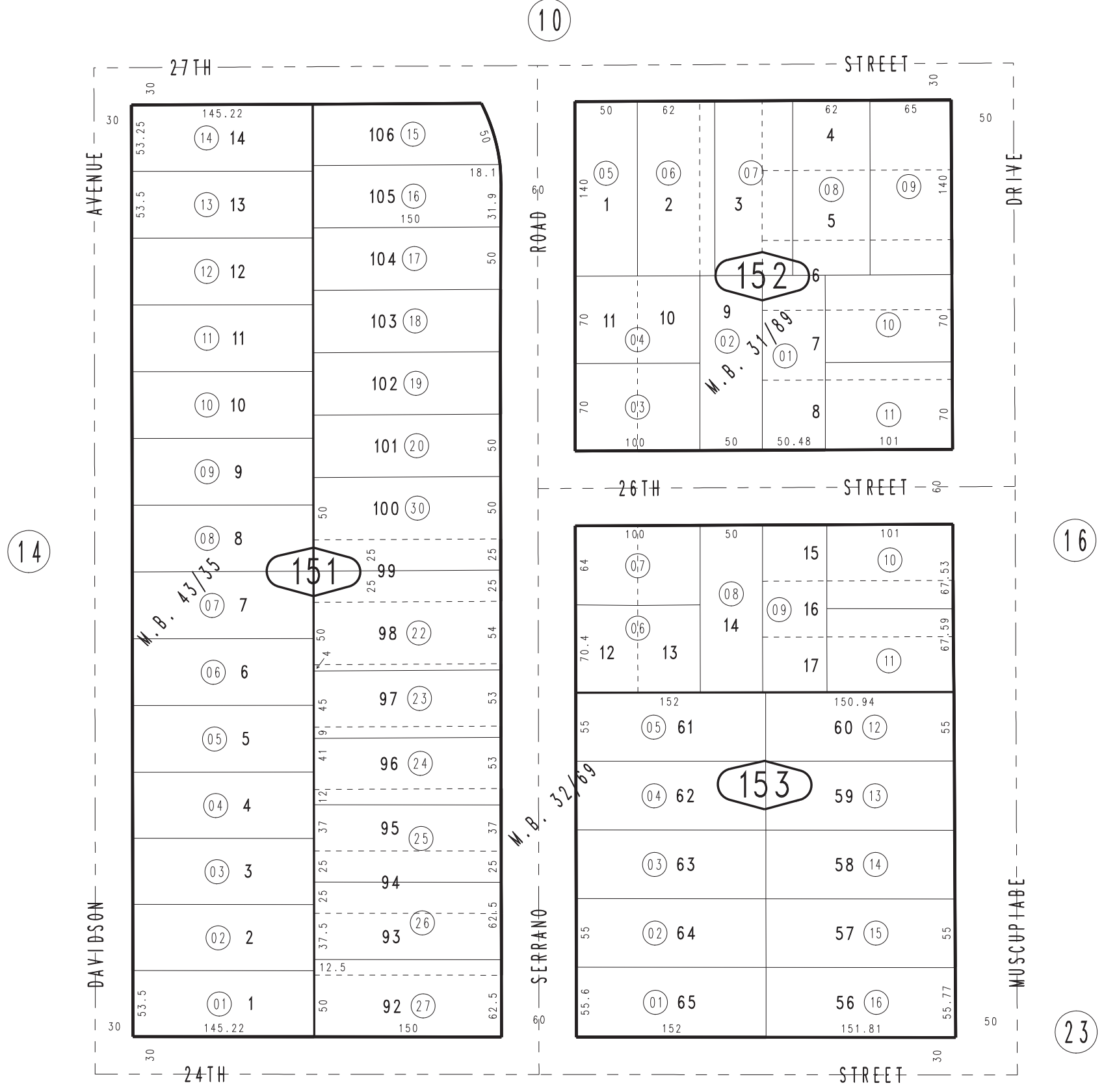


THIS MAP IS FOR THE PURPOSE  
OF AD VALOREM TAXATION ONLY.



Ptn. Shepardson McCook Sub. Tr. No. 2219, M.B. 31/89  
Ptn. Cajon Heights, Tract No. 2265, M.B. 32/69

City of San Bernardino 0148 - 15  
Tax Rate Area  
7001



Ptn. Tract No. 3159, M.B. 43/35

Assessor's Map  
Book 0148 Page 15  
San Bernardino County