

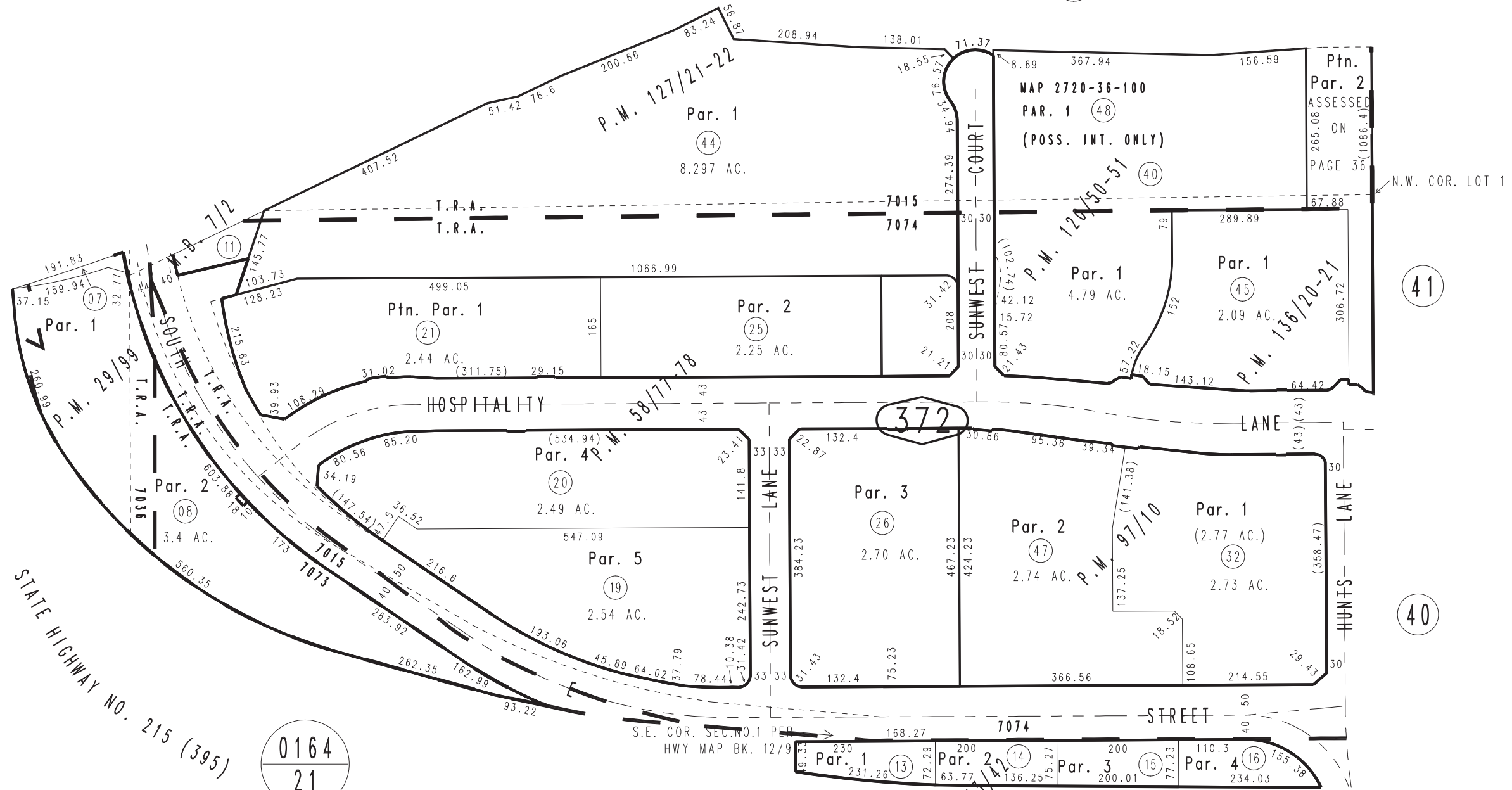
THIS MAP IS FOR THE PURPOSE OF AD VALOREM TAXATION ONLY.

# Ptn. Rancho San Bernardino, M.B. 7/2

City of San Bernardino 0141 - 37  
Tax Rate Area  
7015, 7036, 7073, 7074



0164  
20



- Ptn. Parcel Map No. 11555, P.M. 136/20-21
- Ptn. Parcel Map No. 8089, P.M. 127/21-22
- Ptn. Parcel Map No. 9801, P.M. 120/50-51
- Parcel Map No. 9217, P.M. 97/10
- Parcel Map No. 6022, P.M. 58/77-78
- Parcel Map No. 4491, P.M. 43/42
- Parcel Map No. 3448, P.M. 29/99

0164  
21

0164  
31

STATE HIGHWAY NO. (26) (U.S. 70-99) 10

0164  
27

0164  
32

Ptn. S.W.1/4, Sec. 22  
T.1S., R.4W.

Assessor's Map  
Book 0141 Page 37  
San Bernardino County

REVISED

- 01/25/12 GW
- 01/26/12 GW
- 08/08/12 GW
- 11/19/12 GW
- 03/13/13 KA
- 11/05/14 GW