

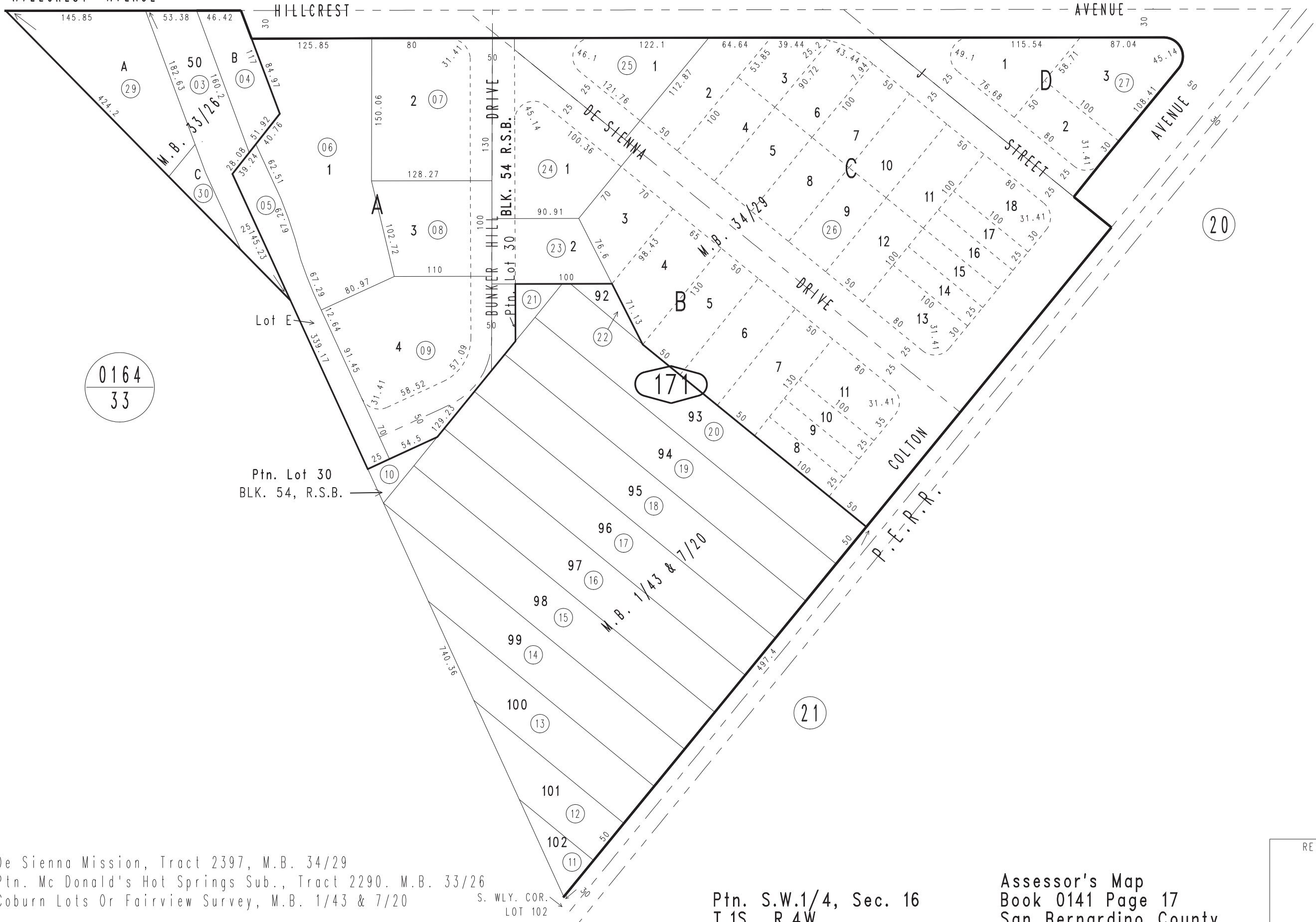
THIS MAP IS FOR THE PURPOSE
OF AD VALOREM TAXATION ONLY.

Ptn. Rancho San Bernardino, M.B. 7/2

City of San Bernardino 0141 - 17
Tax Rate Area
7012



VACATED HILLCREST AVENUE



0164
33

De Sienna Mission, Tract 2397, M.B. 34/29
Ptn. Mc Donald's Hot Springs Sub., Tract 2290. M.B. 33/26
Coburn Lots Or Fairview Survey, M.B. 1/43 & 7/20

S. WLY. COR.
LOT 102

Ptn. S.W.1/4, Sec. 16
T.1S., R.4W.

Assessor's Map
Book 0141 Page 17
San Bernardino County

REVISED