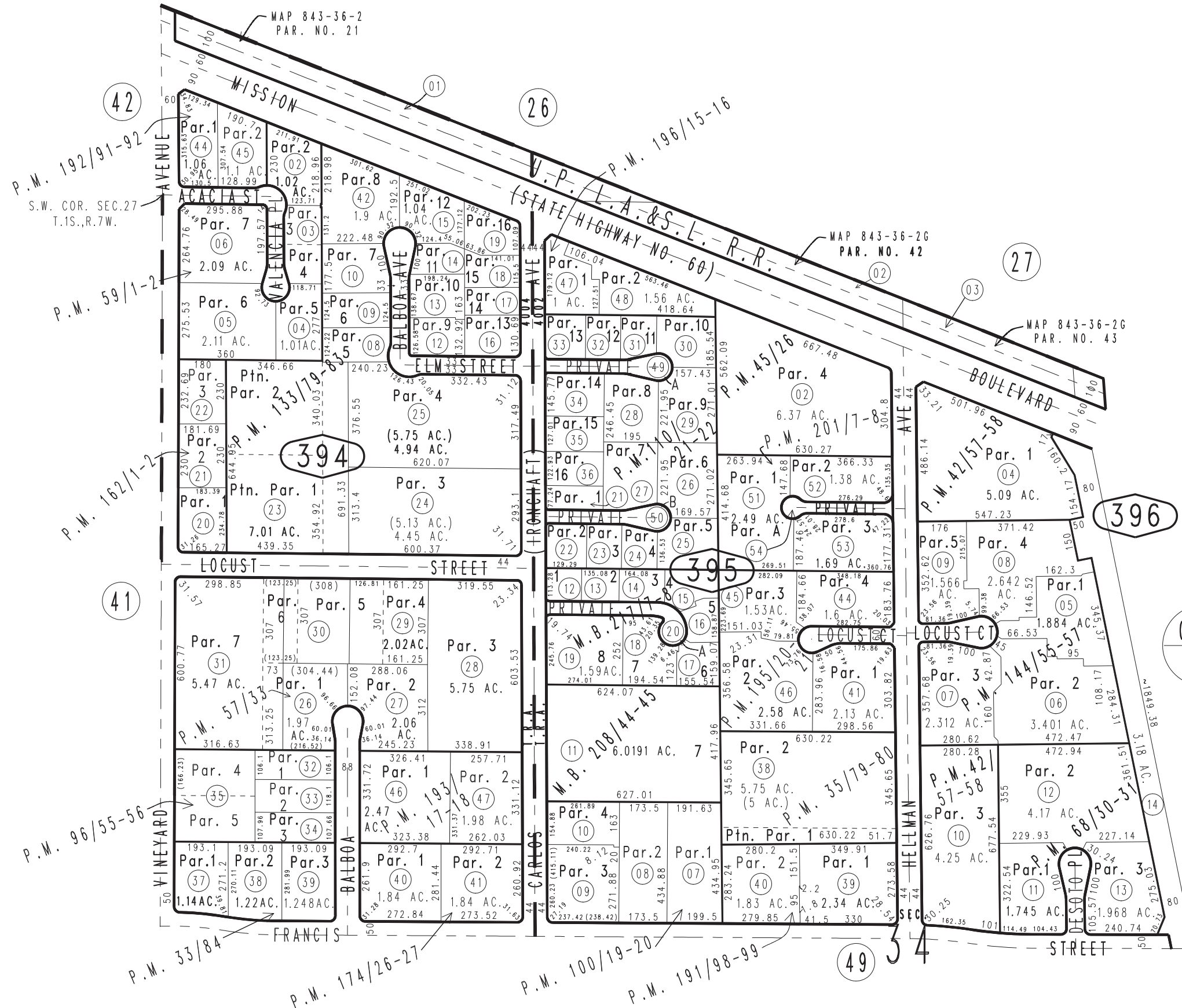


THIS MAP IS FOR THE PURPOSE OF AD VALOREM TAXATION ONLY.



Ptn. S.W.1/4 Sec.27 & Ptn. Sec.34, T.1S.,R.7W., S.B.B.&M.

City of Ontario
Tax Rate Area
4002,4004



0211
24

- Parcel Map No. 16065, P.M. 201/7-8
- Parcel Map No. 15362, P.M. 196/15-16
- Parcel Map No. 15619, P.M. 195/20-21
- Parcel Map No. 15525, P.M. 193/17-18
- Parcel Map No. 15647, P.M. 192/91-92
- Parcel Map No. 15399, P.M. 191/98-99
- Parcel Map No. 12035, P.M. 144/55-57
- Ptn. Parcel Map No. 11269, P.M. 133/79-83
- Tract No. 14012, M.B. 217/7-8
- Ptn. Tract Map No. 13573, M.B. 208/44-45
- Parcel Map No. 9626, P.M. 110/21-22

Parcel Map No. 3891, P.M. 35/79-80
 Parcel Map No. 3671, P.M. 33/84
 October 2004 Parcel Map No. 13183, P.M. 174/26-27

Parcel Map No. 5565, P.M. 57/33
 Parcel Map No. 12703, P.M. 162/1-2
 Ptn. Parcel Map No. 4634, P.M. 45/26
 Ptn. Parcel Map No. 4593, P.M. 42/57-58

Parcel Map No. 6023, P.M. 100/19-20
 Ptn. Parcel Map No. 8862, P.M. 96/55-56
 Parcel Map No. 6566, P.M. 68/30-31
 Parcel Map No. 5905, P.M. 59/1-2

Assessor's Map
 Book 0113 Page 39
 San Bernardino County

REVISED
 04/30/15 GW
 06/02/16 GW
 02/08/17 GW