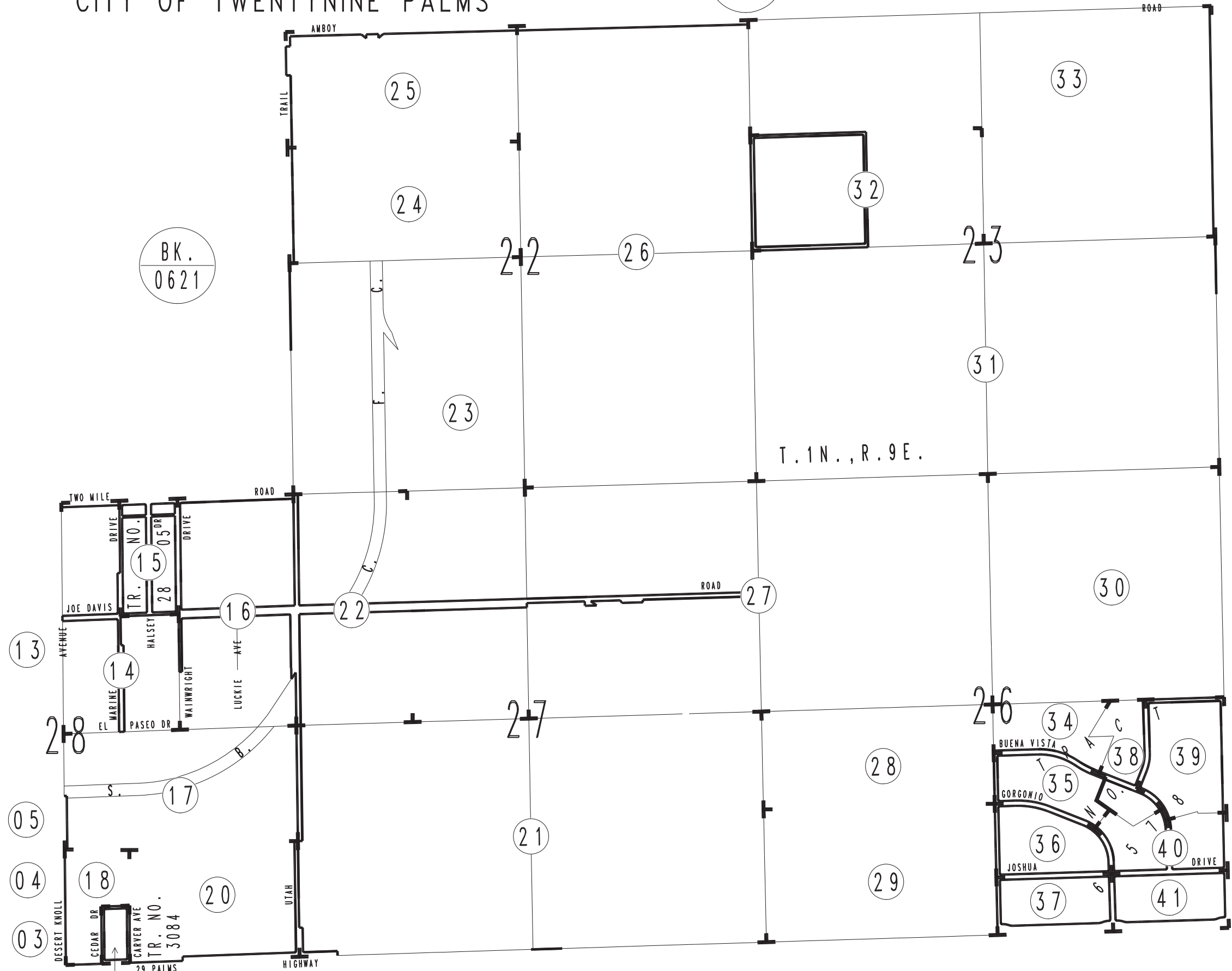


THIS MAP IS FOR THE PURPOSE
OF AD VALOREM TAXATION ONLY.



INDEX MAP BOOK 0623 CITY OF TWENTYNINE PALMS

BK.
0622



BK.
0621

BK.
0624

T. 1 N., R. 9 E.

BK.
0617

BK.
0624

Assessor's Index Map
Book 0623
San Bernardino County

REVISED