

THIS MAP IS FOR THE PURPOSE
OF AD VALOREM TAXATION ONLY.

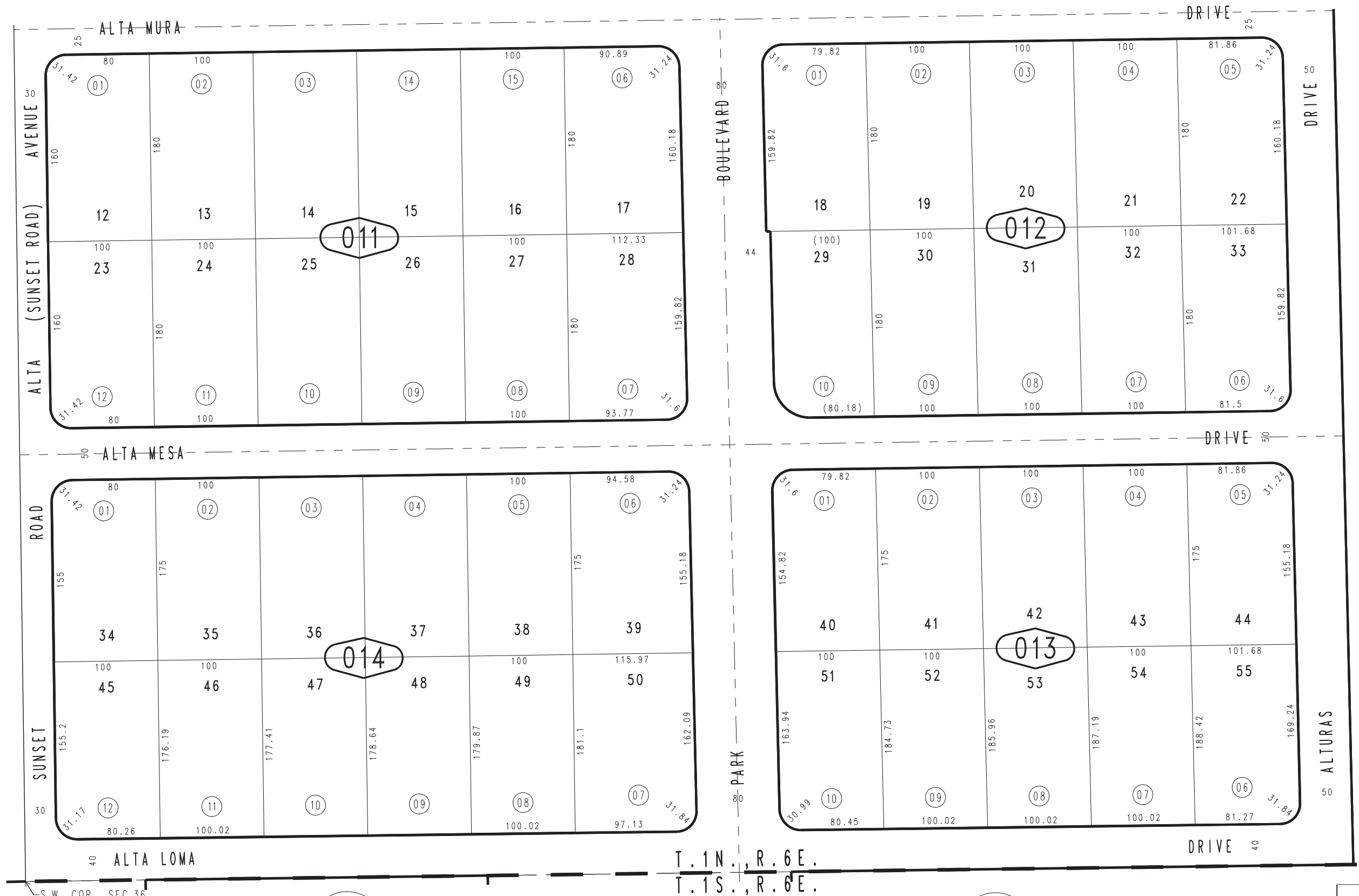
Ptn. Tract No. 2883, M.B. 41/2-3

Morongo Unified
Tax Rate Area
94004

0603-01



0602
36



S.W. COR., SEC. 36
T. 1 N., R. 6 E.

T. 1 N., R. 6 E.
T. 1 S., R. 6 E.

0588
43

0588
30

Assessor's Map
Book 0603 Page 01
San Bernardino County

REVISED
03/31/09 RU
09/16/09 KA